

READY TO THINK BIGGER,
BUILD BETTER AND
LEAD BOLDER?

*Let's create something
extraordinary together.*



HG Graphics Pvt. Ltd.
01275-461000, +91-9810280168
info@hggpl.com
www.hggpl.com

LEO Brand Retail Solutions Pvt. Ltd.
01275-461000, +91-9810280168
info@leobrs.com
www.leobrs.com

DELHI | HARYANA | MUMBAI | BANGALORE

DOWNLOAD
CATALOGUE 2026



HGGPL.COM

LEOBRS.COM



think
BIGGER
build
BETTER
lead
BOLDER

FROM THE DIRECTOR'S DESK

At HG Graphics Pvt Ltd, our journey of nearly three decades has been fueled by one unwavering belief, that branding is more than just visuals; it's about creating meaningful, immersive experiences that connect people with purpose.

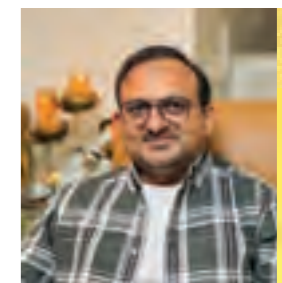
Since our inception in 1996, we've grown from a signage provider to a trusted leader in retail branding solutions provider, driving innovation across fixtures, furniture, visual merchandising, turnkey projects and wayfinding systems. Our strength lies not only in our state-of-the-art manufacturing capabilities but in the passion, precision and professionalism of our 480+ strong team - each one committed to turning our clients' visions into powerful realities.

In an ever-evolving landscape, we have consistently pushed the boundaries of design, technology and sustainability. Whether it's a retail flagship store, an institutional space, or a nationwide rollout, we take pride in delivering projects that are not just functional but transformative. Our transition into a new 1,20,000Sq.ft. facility at Palwal (Delhi NCR) marks yet another milestone in our pursuit of operational excellence and capacity expansion, allowing us to serve our clients BIGGER, BETTER & BOLDER.

Our vision is clear - to redefine the way the world experiences brands. With innovation, sustainability and craftsmanship at our core, HG Graphics continues to be a partner that clients can trust for end-to-end, future-ready solutions.

As we look ahead, we remain committed to creating environments that inspire, inform and elevate.

Thank you for being a part of our story.



Harjee Gandhi
Founder and Consultant



WHERE BOLD IDEAS TAKE SHAPE

Established in 1996, HG Graphics stands as a premier provider of all kind of retail brand solutions. With a proven track record of excellence, we specialize in connecting our clients with their customers through high-quality signage, custom furniture in metal and wood, innovative props and comprehensive visual merchandising solutions.

Our expertise extends to large-format printing, directional signage and seamless wayfinding systems. We deliver turnkey solutions across diverse sectors-including Retail, Malls, Healthcare, Institutions, IT and Tech Parks, MLCPs, Ports and Transit Hubs.

Powered by a team of skilled professionals and state-of-the-art infrastructure, HG Graphics executes Pan India installations with precision and excellence. With a corporate presence in North India and satellite offices in West and South India, we lead Pan India installations for our esteemed clients & even overseas.

Our integrated manufacturing hub spans **1.20lacs sqft** - designed for rapid retail deployment

Only **20 mins** from Raja Nahar Singh Metro Station, Faridabad - easy and efficient access.



BIGGER NUMBERS. BOLDER IMPACT.

30+
Years experience

125+
Pan India Cities

500+
Man Power

9000+
Projects Completed

1.20Lacs+
Sq Ft Production Area

125+
International Clients

300+
Domestic Clients

VISION

To transform retail spaces into powerful, immersive brand experiences through the fusion of innovation, sustainability and world - class craftsmanship. We aim to set new benchmarks in the industry, where each space is a reflection of the brand's core values, creating lasting impressions that resonate with consumers and elevate the retail environment.

MISSION

Our mission is to empower brands by crafting, innovative, sustainable and high-impact environments that bring their stories to life. From world-class signage and visual merchandising to turnkey execution and wayfinding solutions, we leverage cutting-edge infrastructure and a commitment to timely, flawless execution. We are dedicated to transforming spaces into memorable experiences that inspire connection, loyalty and growth, while ensuring every project is delivered with the highest craftsmanship and sustainability.

VALUES

Our values form the foundation of everything we do.

We are driven by innovation, constantly pushing creative boundaries to craft cutting-edge branding solutions. Sustainability is at the heart of our process, with eco-friendly practices integrated into our operations to build a better future.

Our commitment to precision and quality ensures every project reflects world-class craftsmanship and attention to detail.

We believe in customer-centricity, striving to exceed expectations through:

- Timely delivery
- Cost-effective execution
- Responsive service

Powered by a skilled team and guided by:

- Integrity
- Collaboration

MEET THE MAKERS

Our team is the backbone of our success. Comprising over 480+ skilled professionals, our workforce brings together deep industry knowledge, technical expertise and a passion for innovation. From creative designers and project managers to engineers and on ground execution teams, every member plays a vital role in delivering seamless, high-impact branding solutions. Our collaborative approach ensures smooth coordination across departments, allowing us to handle complex, large-scale turnkey projects with precision and agility. Empowered by world-class infrastructure and guided by our core values, our team consistently goes above and beyond to exceed client expectations and bring our vision of transformative, sustainable brand experiences to life.

TABLE OF CONTENTS

TURNKEY PROJECTS 10 - 55

FIXTURES & FURNITURE 56 - 115

VISUAL MERCHANDISING 116 - 131

FAÇADE & SIGNAGES 132 - 145

WAYFINDING PROJECTS 146 - 163



TURNKEY PROJECTS



We are your one-stop destination for comprehensive retail turnkey project execution, providing end-to-end solutions from design to installation. With around 30 years of industry expertise, we specialize in creating complete retail environments - including Fit-outs, Store Interiors, Signage, Fixtures, Custom furniture (in metal and wood), Visual Merchandising, Large-Format Prints, Digital Signage solutions and Innovative Display Props.

Our new 1,20,000+ sq. ft. manufacturing facility a state-of-the-art unit in Palwal (Delhi NCR) is equipped with advanced German and Japanese machinery, enabling us to deliver precision crafted, scalable and sustainable solutions.

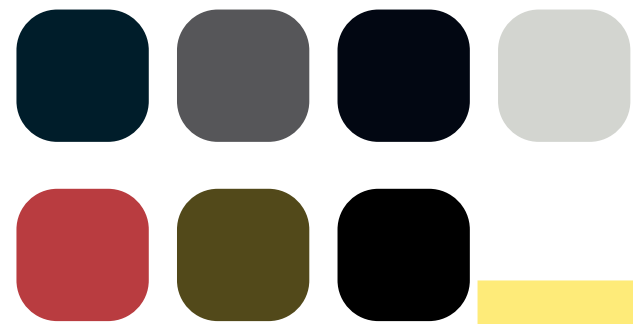
Backed by a team of 480+ skilled professionals, we manage every stage seamlessly from planning and prototyping to production, logistics and on site installation-across India and beyond. Whether it's a flagship store, corporate space, or a large-scale rollout, HG Graphics combines creative vision with technical excellence to craft impactful spaces that enhance customer experience and strengthen brand and identity.



Material board



- 1. OAK FINISH LAMINATE
- 2. LAMINATE
- 3. CANE NET WITH OUTSIDE BATON FRAME
- 4. LAMINATE MAKE ROYAL TOUCHE
- 5. HAMMERED PANEL
- 6. LAMINATE
- 7. CHAMPAGNE GOLD PU PAINT
- 8. SANDSTONE FINISH LAMINATE
- 9. PU STONE BLACK PANEL
- 10. ACRYLIC SOLID SURFACE SHEET
- 11. CHARCOAL LOUVERS WOODEN TEXTURE



OUR APPROACH

One of the retail masterpiece, the Beautiful Homes Studio in Surat for Asian Paints, showcases innovation, precision and craftsmanship at its finest. Designed by the AP team of architects with meticulous attention to detail, this space combines style and functionality seamlessly. We truly enjoyed executing this masterpiece - from the striking fluted facade and seamless glazing to custom-crafted furniture and flawless fixtures, every element has been carefully curated to reflect sophistication and modernity.

This studio is more than a retail space - it's a testament to our team's dedication and vision, setting a new standard for excellence in design and execution.

This store showcases a modern, elegant aesthetic with a warm, inviting atmosphere. Natural materials like light wood, stone and soft fabrics dominate the space, complemented by neutral tones and sophisticated lighting. The furniture is sleek and contemporary with clean lines and sculptural forms. Thoughtful displays and open layouts highlight the textures and finishes, creating a refined showroom that embodies "The Art of Beautiful Living."

LOCATION : SURAT | 3550 SQFT

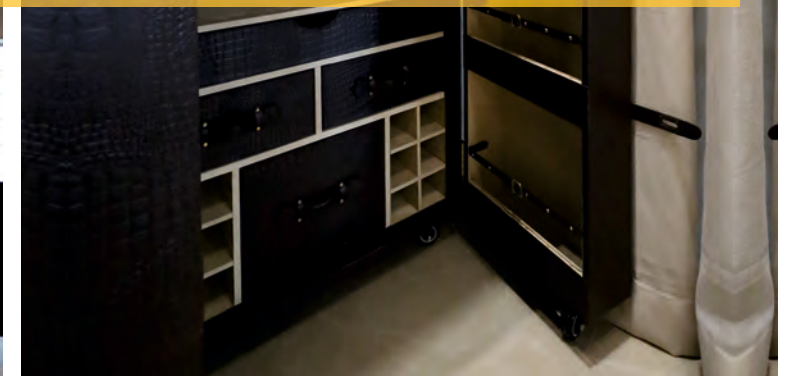
NUMBER OF PROJECTS EXECUTED:
 BEAUTIFUL HOMES - 15+
 STUDIO - 2+





"Heartfelt thanks to the HG Graphics team for your unwavering support and flawless execution across both store launches. Your incredible teamwork, dedication and creativity brought our vision to life. The stunning outcome reflects your attention to detail, professionalism and commitment to excellence. Special appreciation to your site teams - their client handling skills were truly noteworthy. Your efforts have made these turnkey projects a real success and the transformation has been widely appreciated."

DEBJOY GHOSH
RDC - EAST
ASIAN PAINTS





OUR APPROACH

The client envisioned a flagship store design that would redefine in-store customer experience and foster greater engagement. With this clear objective, we embarked on creating a space that reflects innovation, functionality and exceptional design.

This flagship store, located in Karol Bagh, Delhi was meticulously designed and executed as a turnkey project by us. From initial concept and design to fabrication and flawless completion, every phase was managed with precision and expertise. The large LED Screen at the front has been a showstopper for this store facade. Being an old building, it was challenging to execute the same but finally the result is a modern, customer-centric retail environment that embodies the client's vision while setting a new benchmark in retail excellence.

LOCATION : KAROL BAGH, DELHI | 1650 SQFT

NUMBER OF STORES EXECUTED : 2+

NUMBER OF SIS (SHOP IN SHOP) EXECUTED : 2+





"I'm delighted to share my appreciation for the outstanding turnkey project execution delivered by HG Graphics. Your team showcased exceptional professionalism, high quality craftsmanship and ensured timely completion at every stage of the project. Working with HG has truly been a seamless experience. Your deep understanding of retail store setup - from bare shell to fully operational - makes you a dependable and trusted partner. It's been a pleasure collaborating with you and I look forward to many more successful projects together."

RAMESH MADDESHIYA
PROJECT HEAD
KEWAL KIRAN CLOTHING LIMITED



JUNIOR KILLER



OUR APPROACH

A turnkey project in the kids wear retail segment, focussed on delivering high-quality, affordable fixtures from concept to execution.

The objective was to create a vibrant and functional retail environment that aligns with the brand's identity while maintaining cost-effectiveness. This kids junior store has a fun, energetic vibe with bright lights, bold colours and playful design elements. Glossy white surfaces and pops of orange create a cheerful, vibrant feel. Materials like acrylic and metal keep it modern and durable. Compact shelving and colourful displays make it easy for kids and parents to explore, combining functionality with a lively atmosphere.

Our team handled all aspects - from initial design to final implementation. The fixtures were primarily fabricated using mild steel, carefully finished in the brand's signature colour palette. One of the key highlights of this project was the level of detailing involved. From precision-drilled holes in perforated sheets to accurate bending and integration of invisible support systems, every element was crafted with meticulous attention.

Despite the technical challenges, especially around structural stability and finished accuracy, we successfully met all design and functional requirements. The end result is a clean, durable and visually engaging retail space that caters perfectly to the target demography.

The aesthetics of the fixtures in this store lean towards a clean, modern, and somewhat casual style.

LOCATION : SARATH CITY MALL, HYDERABAD | 595 SQFT

NUMBER OF PROJECTS EXECUTED: 4+





"Working with HG Graphics has always been about achieving milestones together. The team brings out-of-the-box thinking, understands ideology, technicalities and flows creativity from mind to the walls and floors of retail spaces. Their craftsmanship creates visually inviting stores that offer peace, calm and deep engagement. Cool-minded, focussed and dedicated - even under challenges - they ensure timely execution with passion. It's always a pleasure creating with HG+. Together, we truly believe we can achieve more."

SATISH PATEL
VM HEAD
KEWAL KIRAN CLOTHING LIMITED



C58F4F

Material board

Fabric

White Paint

Wall Texture

Colour palette

Flooring

Laminate

OUR APPROACH

We delivered a comprehensive turnkey retail store solution for Sweet Dreams, managing every aspect of the project with precision and creativity. Our services included complete fit-out solutions. While other stores we executed featured high-quality Stainless Steel mirror finishes, this Noida store was done in mild steel (MS) fixtures with powder coating, as well as impactful signage designs.

Additionally, we executed visually engaging visual merchandising (VM) tailored to the brand's identity. With a focus on quality and seamless execution, our expertise ensures enhanced customer experiences. This project reflects our dedication to deliver comprehensive solutions that strengthen brand presence and connection.

The design is functional and the furniture is subdued:

- Modular shelving units: Allowing flexible product arrangement.
- Simple display tables: Designed for folded items and featured products.
- Minimal garment racks: Showcasing hanging apparel.
- A clean and functional checkout area.
- Spacious walkways: Facilitating easy browsing.

Overall, the design prioritizes a bright and organized environment where the colorful and diverse range of clothing takes center stage, offering a straight forward and enjoyable shopping experience.

LOCATION : R CUBE, NOIDA | 460SQFT
NUMBER OF PROJECTS EXECUTED : 6+





Mood board

Material

Inspiration

OUR APPROACH

This is a **DESIGN+BUILD** project.

- **Gallery-Inspired Display:** The recessed, arch-shaped niches in the wall creates individual display spaces, giving the shoes a look and feel of art pieces in a gallery. This elevates the perceived value of the merchandise.
- **Warm and Intimate Lighting:** The soft, focused lighting within each niche highlights the details of the shoes, while the overall ambient lighting is warm and inviting, creating a cozy atmosphere.
- **Neutral and Earthy Color Palette:** The use of warm beige and off-white tones for the walls and fixtures provides a sophisticated and subdued backdrop that allows the shoes to take center stage.
- **Mix of Display Styles:** The store utilizes both the recessed wall niches and open shelving units, offering variety in how the merchandise is presented. The open shelves provide higher capacity and easier access.
- **Natural Elements:** The inclusion of potted plants adds a touch of freshness and life to the space, softening the hard lines and contributing to a more welcoming environment.
- **Comfortable Seating Area:** The plush sofa in a recessed alcove creates a dedicated and comfortable space for customers, encouraging them to stay longer and comfortable.
- **Sophisticated and Boutique Feel:** The combination of the unique display niches, warm lighting and comfortable seating creates a sophisticated and boutique shopping experience.
- **Textured Flooring:** The marble or stone-like flooring adds a touch of luxury and visual interest with its subtle veining.

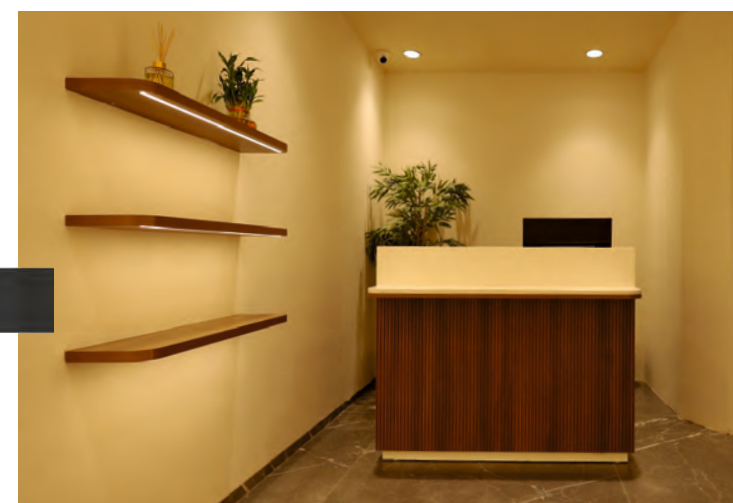
LOCATION : DEFENCE COLONY, DELHI | 1050 SQFT



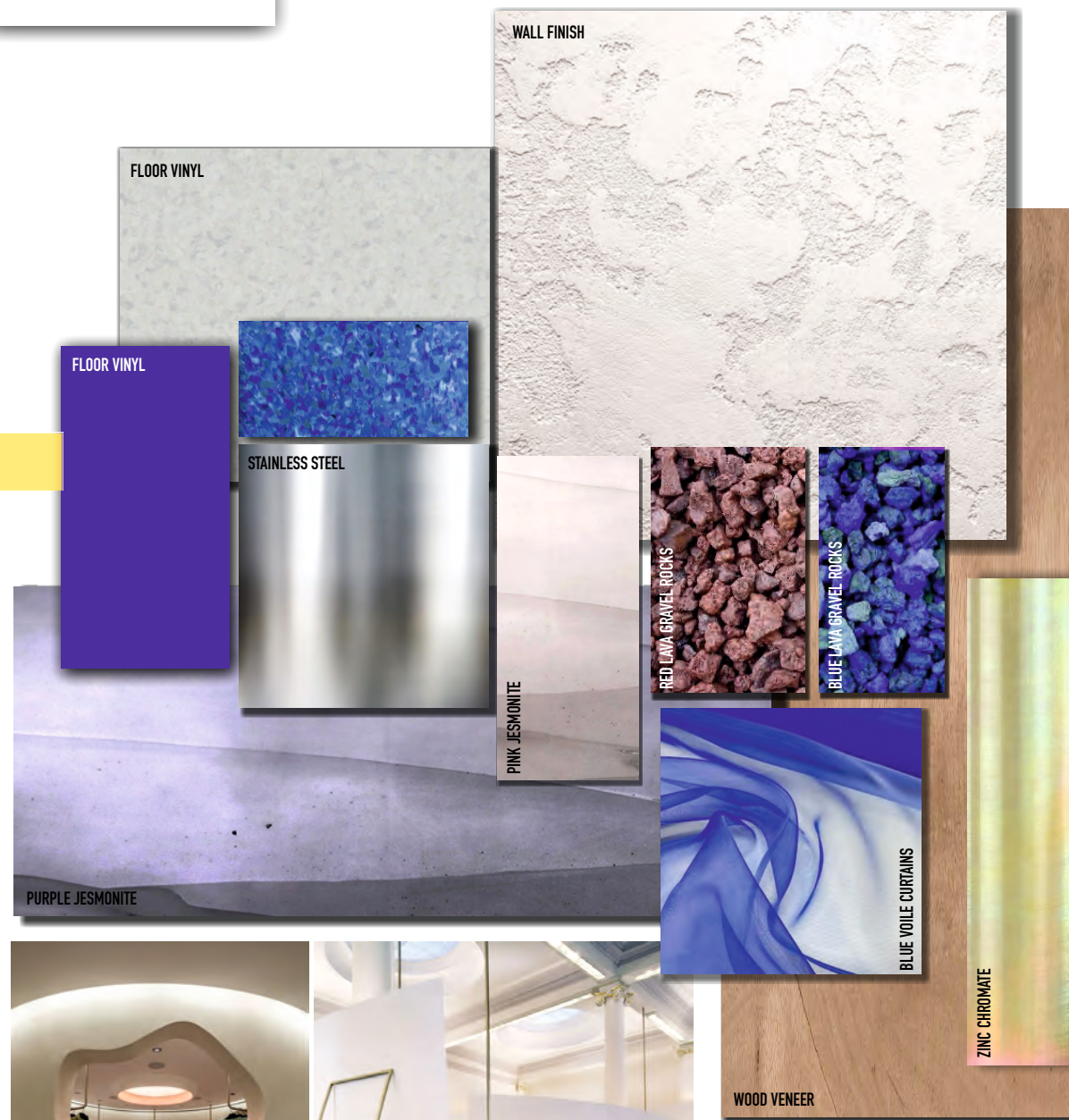


"HG Graphics transformed our latest Crimzon footwear store with exceptional design and execution. Their creativity, attention to detail and professionalism brought our brand vision to life, creating a visually stunning and functional retail space. The craftsmanship was top-notch and within budget. Customers love it and we couldn't be happier. Highly recommended for innovative retail design!"

ROHAAN DALWANI
BRAND HEAD
CRIMZON



MATERIALS



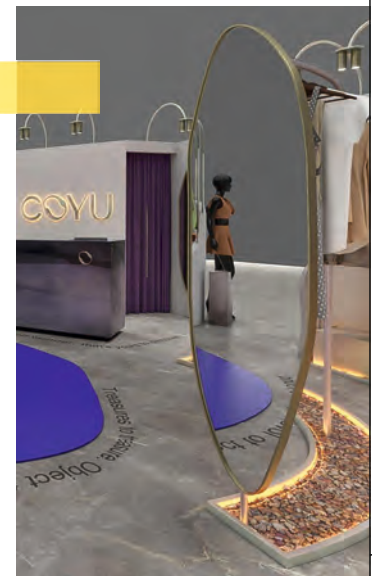
OUR APPROACH

This Coyu pop-up store has a distinctive nautical or boat-like aesthetic. Entire metal units had a special unusual finish - Zinc Chromate which required a process to achieve it.

- Shape and Structure: The entire store appears to be designed to resemble a boat's hull, creating a unique and memorable shopping experience.
- Colour Palette: The dominant colour is white & blue reinforcing the nautical theme and creating a bright, clean look.
- Circular Racks: The use of circular clothing racks maximizes space efficiency and adds a dynamic element to the layout.
- Exposed Metal: Zinc Chromate finish fixtures add a touch of elegance and contrast to the white structure.
- Open and Accessible: The open design encourages browsing and interaction, typical for a pop-up environment.
- Minimalist Decor: The focus is on the clothing and the boat-like structure itself, avoiding excessive ornamentation.

The overall aesthetic is playful, eye-catching and designed to create a temporary structure but impactful brand presence. It's likely intended to be a fun and engaging shopping experience.

LOCATION : AMBIENCE MALL, DELHI | 528 SQFT





"We've had a wonderful experience working with HG Graphics on several visual merchandising and fixture projects. Their professionalism, creativity and sharp attention to detail have consistently elevated our retail spaces. Whether it's in-store branding, large-scale graphics, or seasonal updates, their team always delivers top-quality results with seamless execution. What we value most is how they bring our brand identity to life through immersive, visually impactful experiences. HG Graphics isn't just a vendor - they're a trusted and innovative partner who understands our vision. We're excited to continue collaborating and highly recommend their services."

SHIVENDRA BHARDWAJ
GROWTH SPECIALIST - VM
LYSKRAFT



Material board

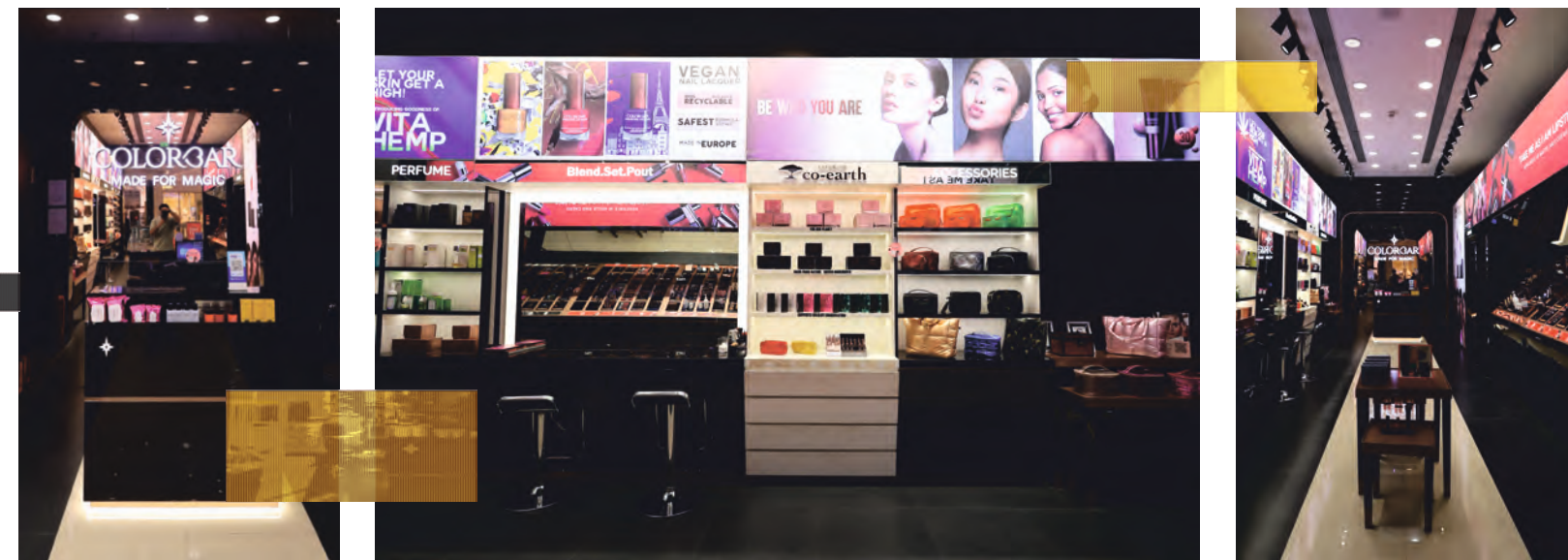


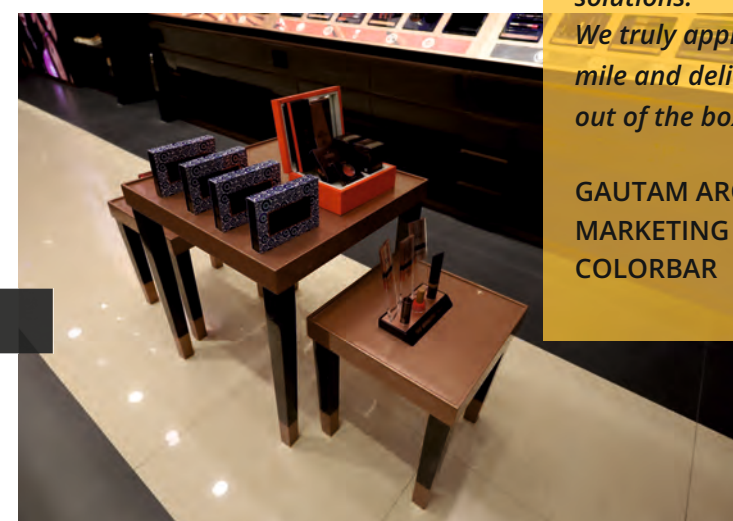
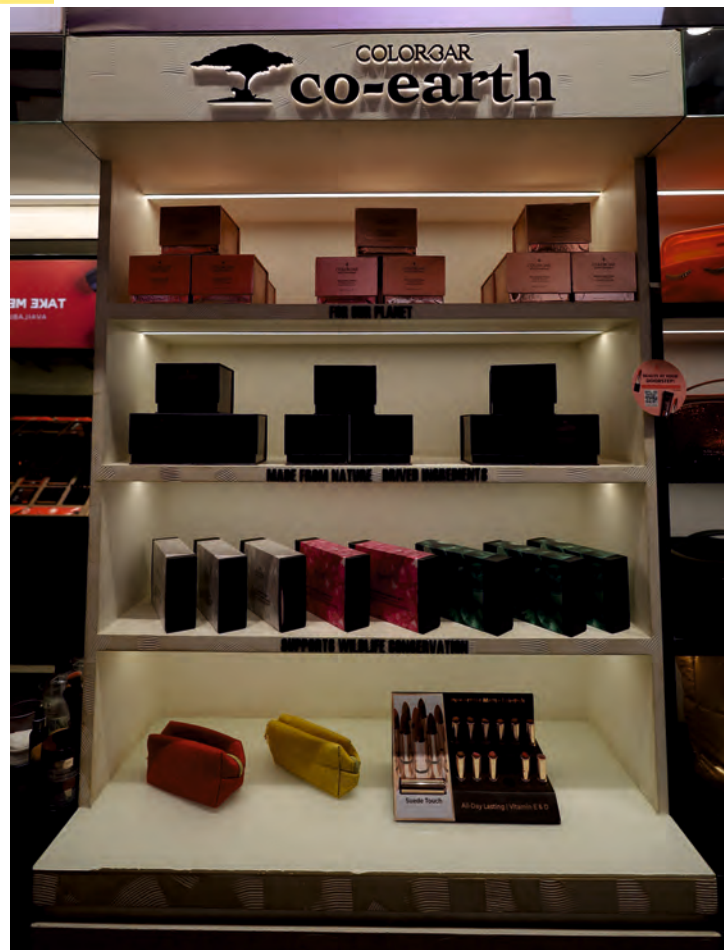
OUR APPROACH

Colorbar a prominent cosmetics brand, embarked on an ambitious project to enhance its retail presence by developing a new store concept. This initiative aimed to create a modern, engaging and customer - centric environment that would effectively showcase brand products and elevate the overall shopping experience.

To execute this vision, Colorbar partnered with HG Graphics Pvt. Ltd. a specialized turnkey solutions provider with a proven track record in retail space design and execution. For the above perspective following changes have been incorporated like Black colour fixture to Brown Metallic fixture and Facade Signage with rays strip and overall look like Flooring, Ceiling, Cash Counter, fixture and most importantly back wall of Cash Counter in Rose Gold Mirror finish Glass with Insignia logo.

LOCATION : MALL OF MILLENNIUM, WAKAD, PUNE | 506 SQFT
 NUMBER OF PROJECTS EXECUTED: 11+





"HG Graphics is a truly valued partner when it comes to bringing ideation to execution. A team of thorough professionals, they ensure that your thoughts translate into their best form to engage consumers as intended. When others express their limitations, HG Graphics presents solutions. We truly appreciate their dedication and efforts to go the extra mile and deliver smiles for us and our consumers alike with their out of the box VM, POS, Event and Retail solutions."

GAUTAM ARORA
MARKETING MANAGER
COLORBAR



STONE TEXTURED VINYL



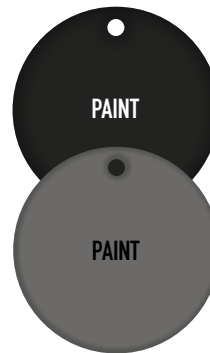
WOODEN FLOORING

PLASTER TEXTURE VINYL



WOOD TEXTURE VINYL

PLAIN VINYL



PAINT

PAINT

CNC PANEL

OUR APPROACH

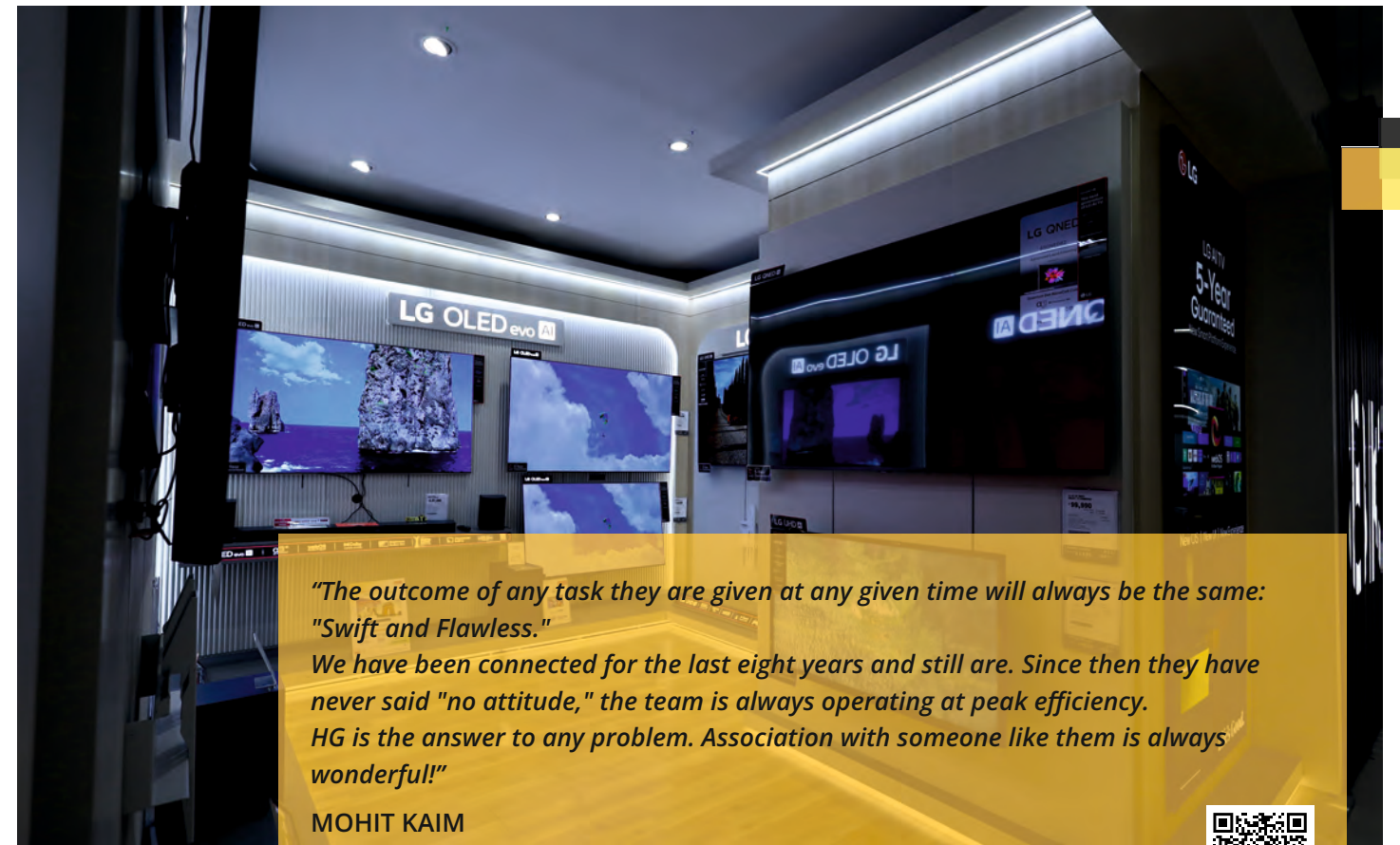
This LG shop in shop project was executed by our team with a harmonious blend of materials and finishes. The use of Interior Film/Vinyl finish ensures durability while adding a stylish texture, making the store visually appealing and easy to maintain. Fluted panels enhance the space with a dynamic and modern touch, introducing depth and sophistication. Pre-laminated MDF with PU paint provides a sleek, high-gloss look, reinforcing durability and elegance.

Cove lighting- featuring LED strips and rounded fixtures- creates a warm and inviting ambiance, perfectly complementing the store's aesthetics. Finally, wooden flooring, paired with stainless steel skirting, achieves a seamless balance between natural warmth and contemporary refinement.

LOCATION : RELIANCE DIGITAL, AMBIANCE MALL, DELHI | 182 SQFT

NUMBER OF PROJECTS EXECUTED: 100+

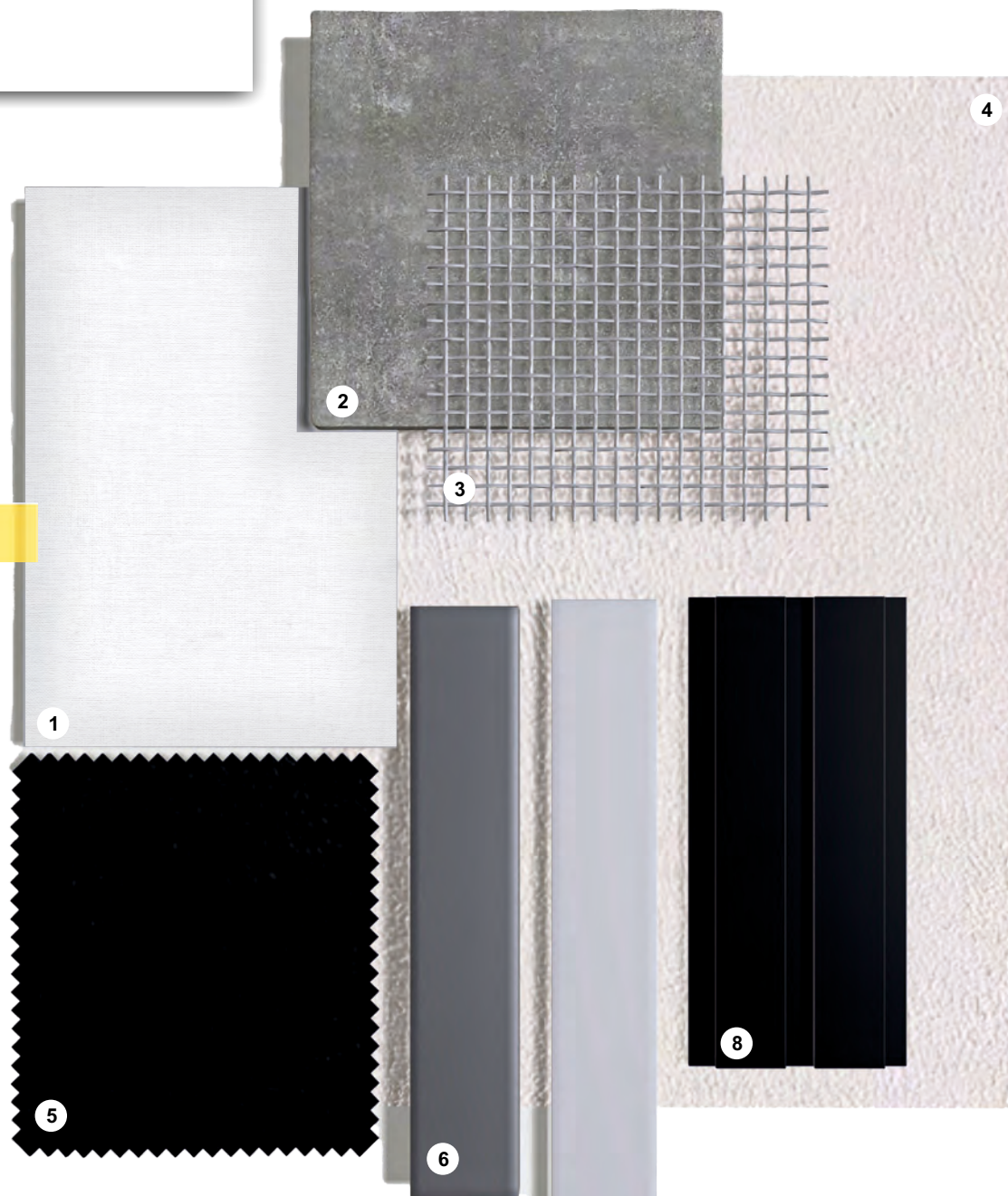




*"The outcome of any task they are given at any given time will always be the same: "Swift and Flawless."
 We have been connected for the last eight years and still are. Since then they have never said "no attitude," the team is always operating at peak efficiency. HG is the answer to any problem. Association with someone like them is always wonderful!"*

MOHIT KAIM
 ACCOUNT DIRECTOR
 HSAD INDIA





Material board

- 1. RAW FABRIC FOR BACK LIT LIGHT BOX
- 2. CONCRETE TILES
- 3. MS MESH
- 4. WALL PAINT
- 5. BLACK LEATHER
- 6. SILVER POWDER COAT
- 7. WHITE POWDER COAT
- 8. WPC PANEL

OUR APPROACH

This Brand marked its entry into the Indian market with the establishment of its first flagship store in Bhucho Mandi, Bathinda. Initially focused on SIS (Shop-in-Shop) stores, the client entrusted us to execute this standalone store while adhering to their global design guidelines. We skilfully adapted these guidelines to create a space that reflects Anta's brand identity and vision.

This flagship store is an innovative concept, uniquely divided into two distinct areas - one as a Premium retail outlet and the other as a Functional factory outlet. Our team executed this project as a comprehensive turnkey solution, overseeing every aspect from in-house fabrication to the seamless implementation of fit-outs, facade, fixtures and furniture. The result is a meticulously designed space that embodies Anta's international standards while catering to the preferences of the Indian market.

The store features a modern, functional sportswear aesthetic with clean lines, bright lighting and organized displays. Materials appear durable & cost effective (Tile, Metal, Laminate). The inferred mood board includes neutral colors, athletic imagery and keywords like "modern" and "functional." Furniture is practical, including shelving, racks, display tables, a cash wrap, fitting rooms and mirrors, all designed for efficient product showcasing.

LOCATION : BUCCHO MANDI, BHATINDA, PUNJAB | 2010 SQFT



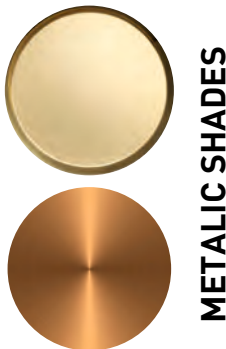


"HG has executed our Bhatinda store which is a factory outlet cum Retail store as a turkey project. They have also executed few SIS for our franchisee. They have been efficient and professional, ensuring that every detail was taken care of with precision and care. Their complete in-house manufacturing facility is the core strength and is able to deliver whatever is expected. Look forward to work more with them in future."

ASHISH BANSAL
COUNTRY HEAD
ANTA SPORTS PRODUCT LTD.



MATERIAL BOARD



OUR APPROACH

This is a Pop-up store executed at the Udaipur Airport.

It has a modern, industrial-chic aesthetic with a transparent see thru look with Metal and Glass structure. Materials include Metal framing, Glass / Acrylic panels, Wood accents and customised LED lighting. Centre ceiling unit with profile lighting was made in aluminium tubes and ACP to make it light in weight yet attractive.

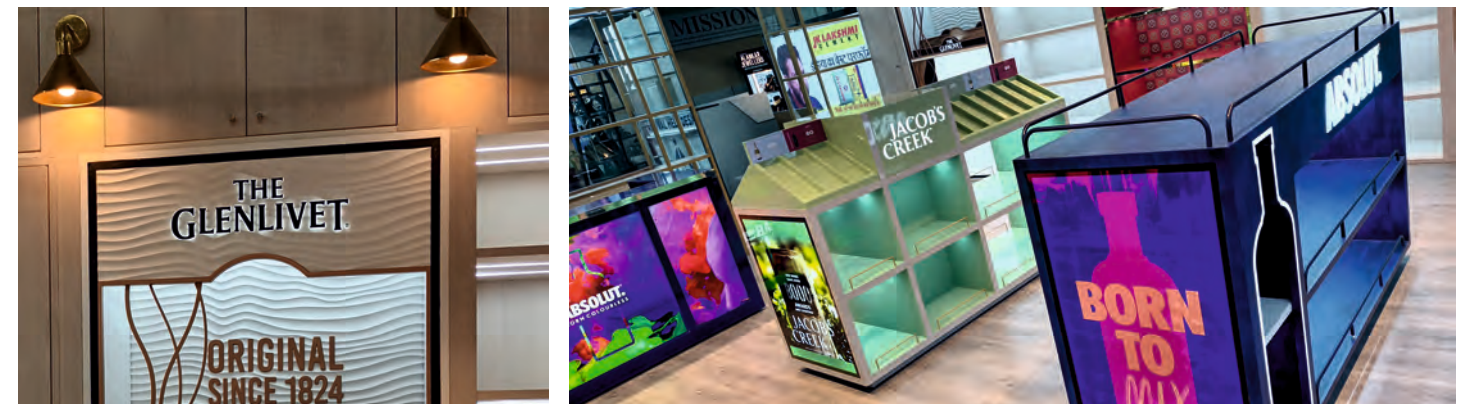
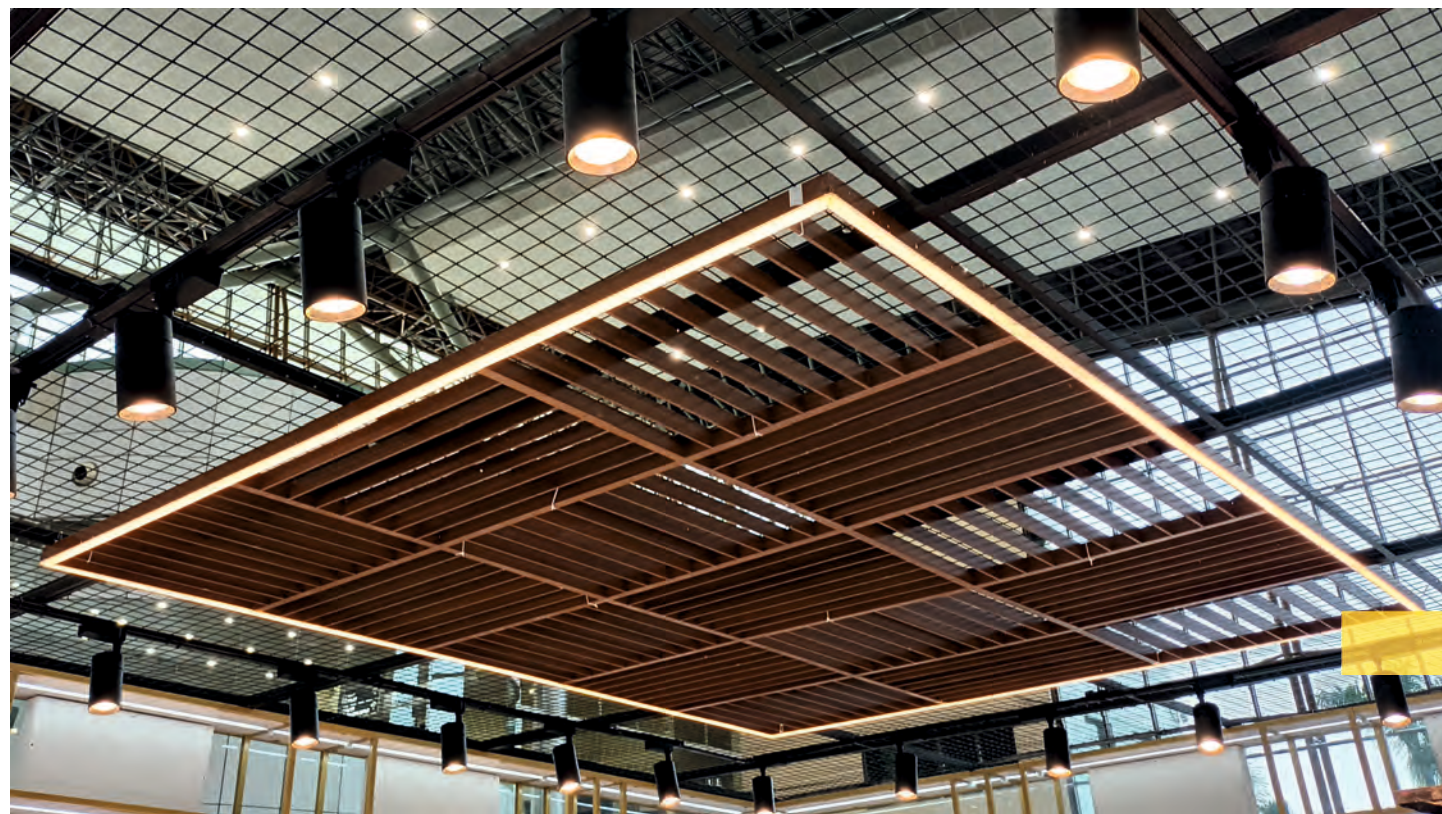
Entire setup was made keeping in mind to be easily shifted to the other place.

The mood board likely features industrial tones with vibrant product colors, smooth and rough textures and keywords like transparent and modern. Furniture is minimal and functional with modular glass/acrylic shelving and a central counter. The design emphasizes product visibility and a contemporary feel in a temporary space.

LOCATION : UDAIPUR AIRPORT | 500 SQFT

COLOUR PALETTE



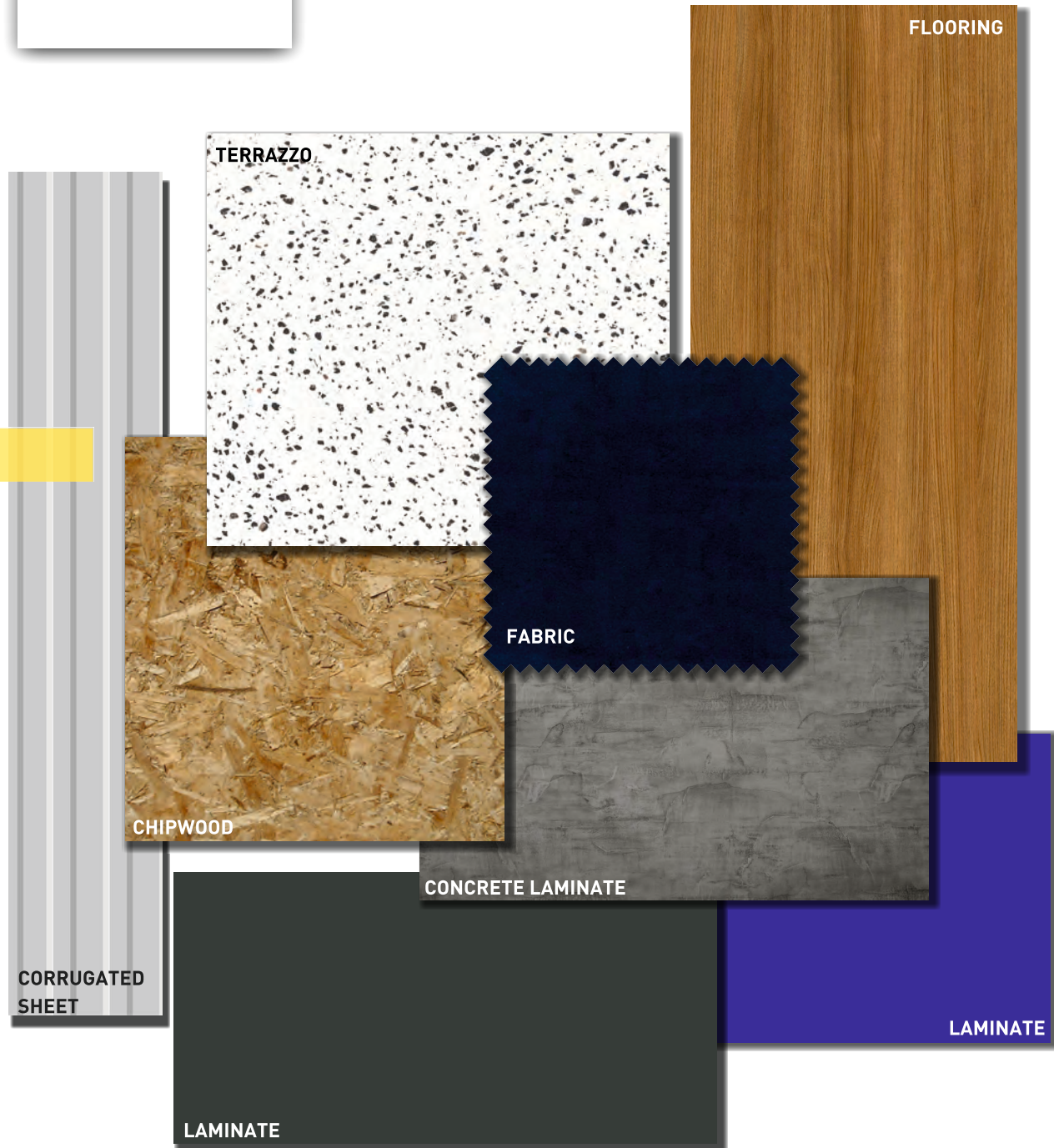


"HG Graphics is synonymous to Quality. For them, the jobs don't end just after completing the projects, but they are always available for any service required post installation too. Understanding the client's requirements is one part but delivering as per the expectations is the crucial one and they always excel in that. Also, making a wine shop into a premium brand store is a tough job as lots of unexpected changes comes on site during final installation and HG Graphics accommodate all the changes required with great quality and proper finish."

RAKESH PRAJAPATI
TERRITORY MARKETING MANAGER
PERNOD RICARD



Material board



OUR APPROACH

Our team has successfully executed over 38+ Pepe Jeans outlets at multiple locations across India, providing comprehensive Furniture, Fixtures, Signage & Facade solutions from start to finish. Every project reflects our dedication to delivering excellence and meeting the highest industry standards. With seamless coordination, innovative designs and efficient execution, we aim to create engaging retail spaces that resonate with the Pepe Jeans brand. Our expertise and commitment to quality continue to position us as leaders in retail project management and execution.

The floor fixtures in the images reflect a modern, minimalistic manufacturing aesthetic with a focus on clean lines and neutral tones. The tables and display units are constructed using a combination of terrazzo-like surfaces and concrete-style bases, which give off a sturdy and industrial vibe while maintaining a polished, retail-friendly appearance. The smooth, matte finishes and monochromatic palette help to keep the focus on the apparel, while their modular and geometric forms contribute to an organized and contemporary store layout. These fixtures seamlessly blend form and function, providing ample display space without overwhelming the store's open and airy atmosphere.

The store features a modern industrial look with clean lines and raw textures. Fixtures include terrazzo-topped display tables with OSB (Oriented Strand Board) panels, adding a natural, textured feel. Black powder-coated metal racks with concrete looking bases provide structure and durability, while at some places its plywood shelving. Over all, it's a creation of balanced mix of raw and refined materials, giving the space a stylish, urban vibe that keeps the focus on the merchandise.

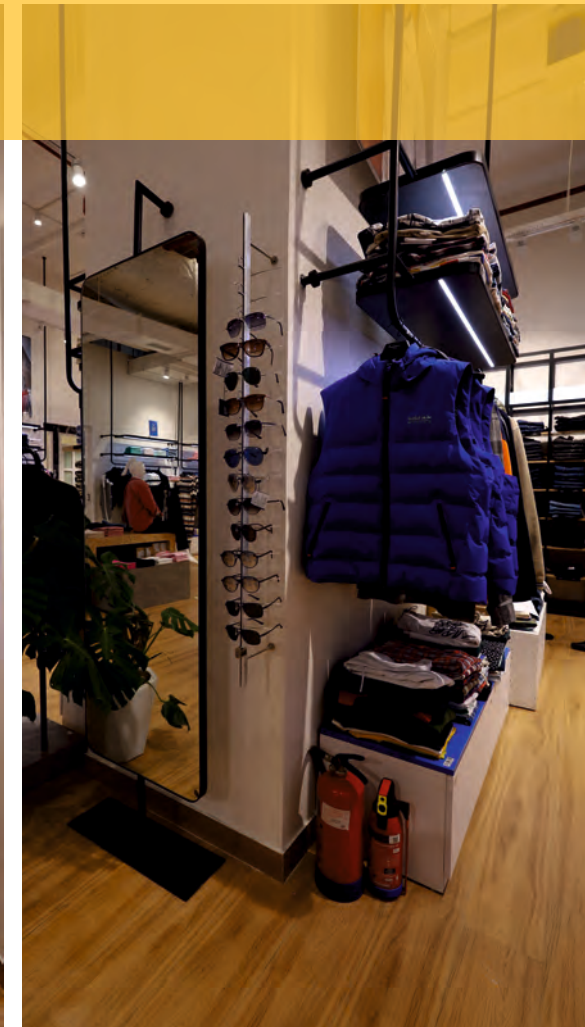
LOCATION : ELANTE MALL, CHANDIGARH | 1710 SQFT
NUMBER OF PROJECTS EXECUTED: 38+





"It's been over two years since HG Graphics has been providing us with Turnkey solutions for our retail stores across India. The quality of their Fixtures, Signage and other branding materials has been exceptionally outstanding. Their team truly understands their craft, offering timely resolutions while staying within budgets. HG Graphics is extremely professional and has proven to be a true one-stop shop for all our retail branding needs. We highly recommend HG Graphics to anyone looking for a partner who delivers both quality and reliability."

PRATIK SHARMA
PROJECT MANAGER
PEPE JEANS



FIXTURES & FURNITURE



We bring nearly 15+ years of expertise in manufacturing premium fixtures and furniture for dynamic retail and commercial spaces. Our 1,20,000+ sq. ft manufacturing facility a state-of-the-art unit in Palwal (Delhi NCR) - is equipped with advanced German and Japanese machinery, ensuring precision fabrication in both metal and wood.

From complete store furniture and fixtures in any specifications, custom display units, gondolas, kiosks and FSUs to full-scale modular furniture for retail stores, offices and institutional spaces, our solutions blend durability, aesthetics and functionality. Our in-house capabilities-including CNC cutting, AMADA metal bending, laser etching, laser spot welding, 11-tank phosphating unit, automated powder coating unit, edge banding, thermoforming and 3D printing-enable us to deliver turnkey solutions under one roof.



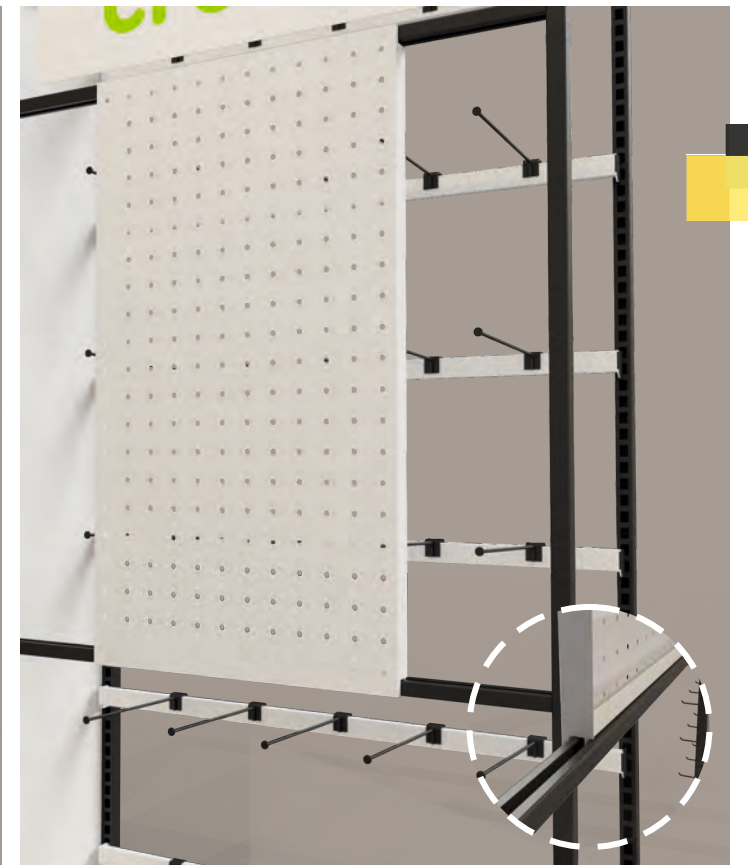
Front Slotted Metal Fixture



Front view



Back view

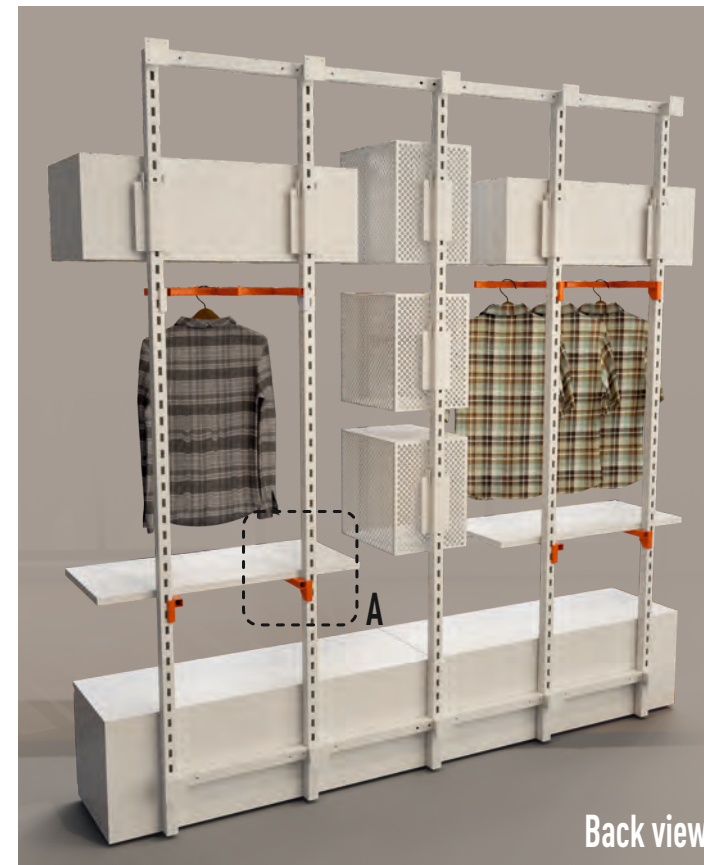


A highly adaptable and cost-efficient system with visible slotting, allowing quick reconfiguration of shelves and hangers—ideal for high-churn retail environments. Commonly seen in brands like Crocs, Pepe jeans, Anta, Reliance Trends and Zudio, Coyu, Home Essential, Blackberry where speed, scalability, and frequent VM changes are key.

Back Slotted Metal Fixture



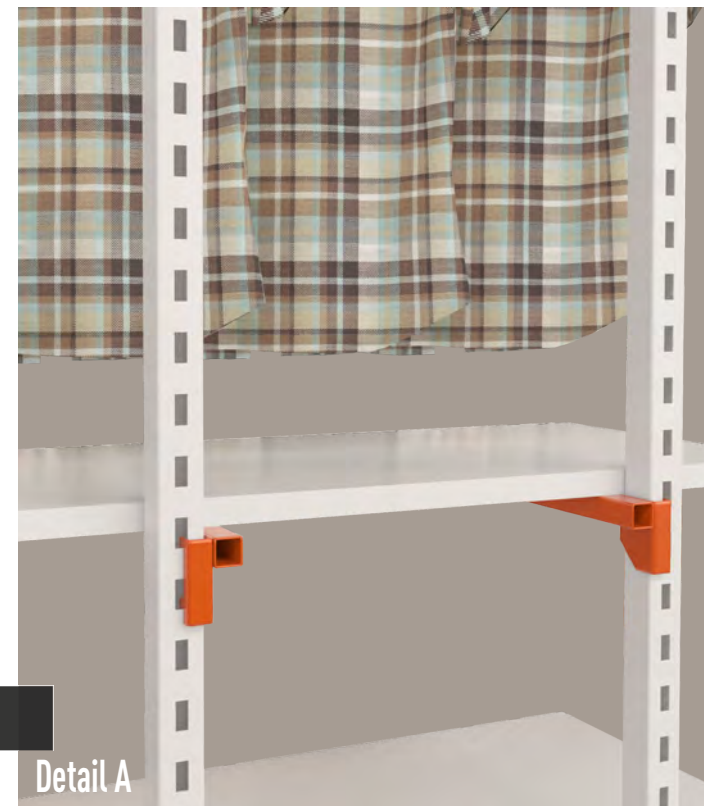
Front view



Back view



Back close view



Detail A



Detail B

A concealed-slot system offering a clean, seamless look while maintaining full modular flexibility—preferred in premium retail environments. Widely used by brands like Killer Jeans, Lacoste, Sweet Dreams, Red Chief, ABFRL-W where minimalism and refined aesthetics drive store design.

Side Slotted Metal Fixture



Front view



Back View



Back Close View



Detail A



Detail B

A heavy-duty, double-sided slotted system designed for higher load capacity and accessibility from both sides—ideal for gondolas and central display units. Commonly deployed in stores like Raymond, Fabindia, Nike for bulk merchandising and high footfall areas.

Sustainable Fixture in Brass & Wood



Front view



Back View



A premium fixture language combining responsibly sourced wood with brass detailing to create warmth, durability, and a timeless retail experience. Adopted by brands like Fabindia & ABFRL-W that emphasize sustainability and craft-led storytelling.

Wall Mounted Fixture



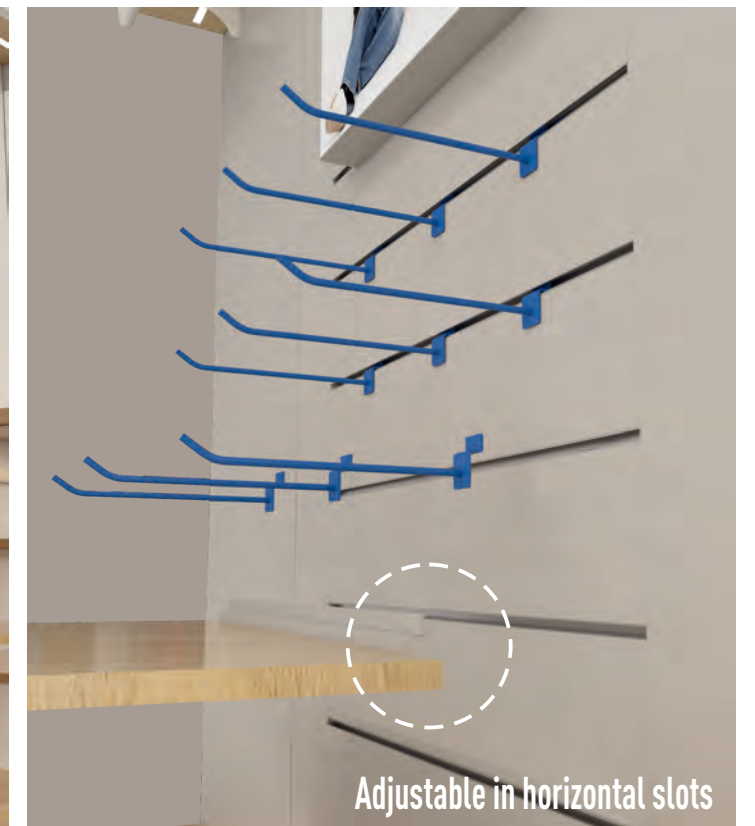
Front view



Back View



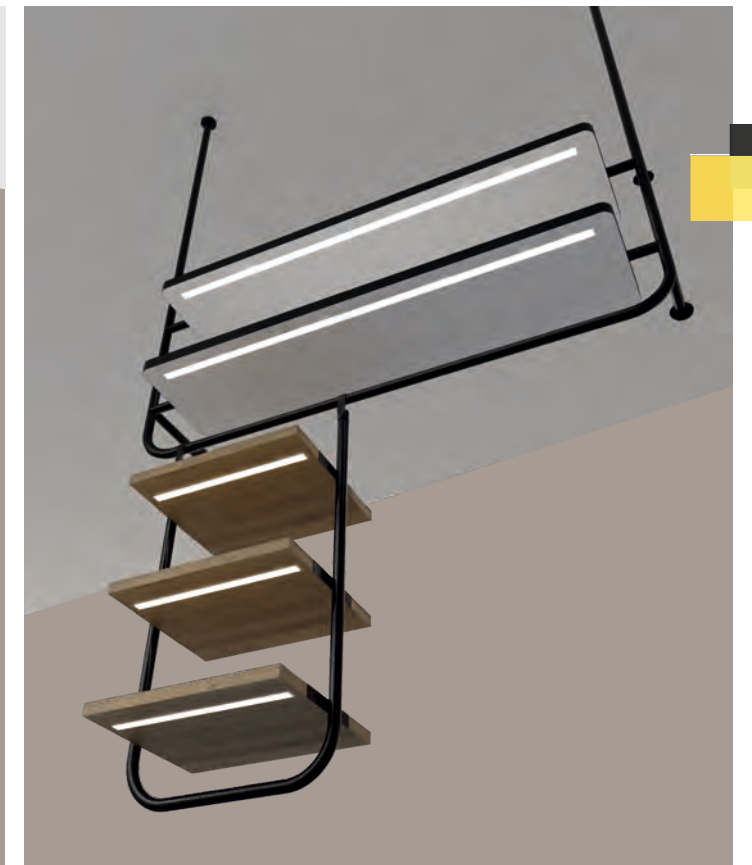
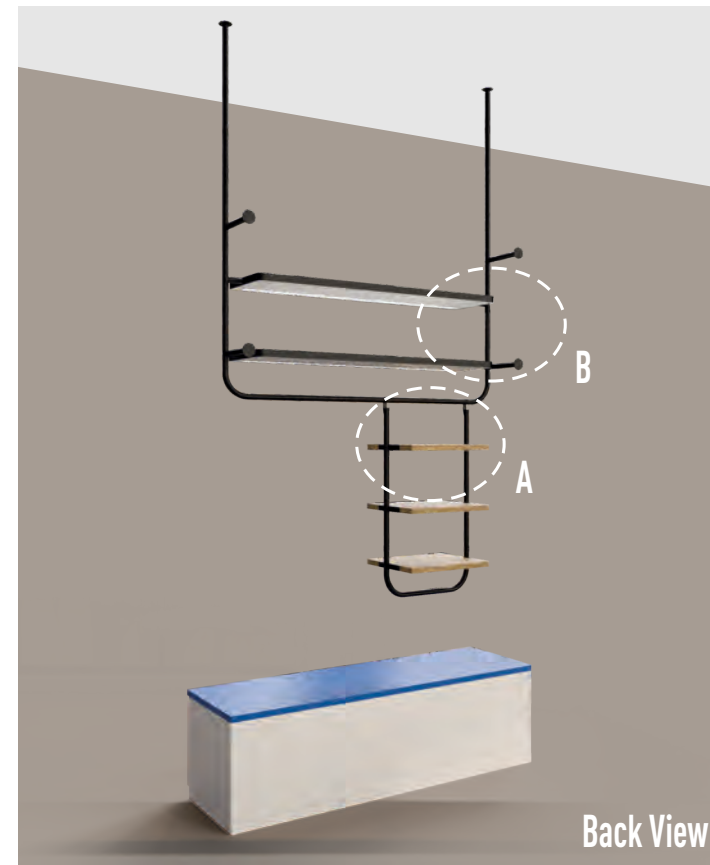
Adjustable in vertical slots



Adjustable in horizontal slots

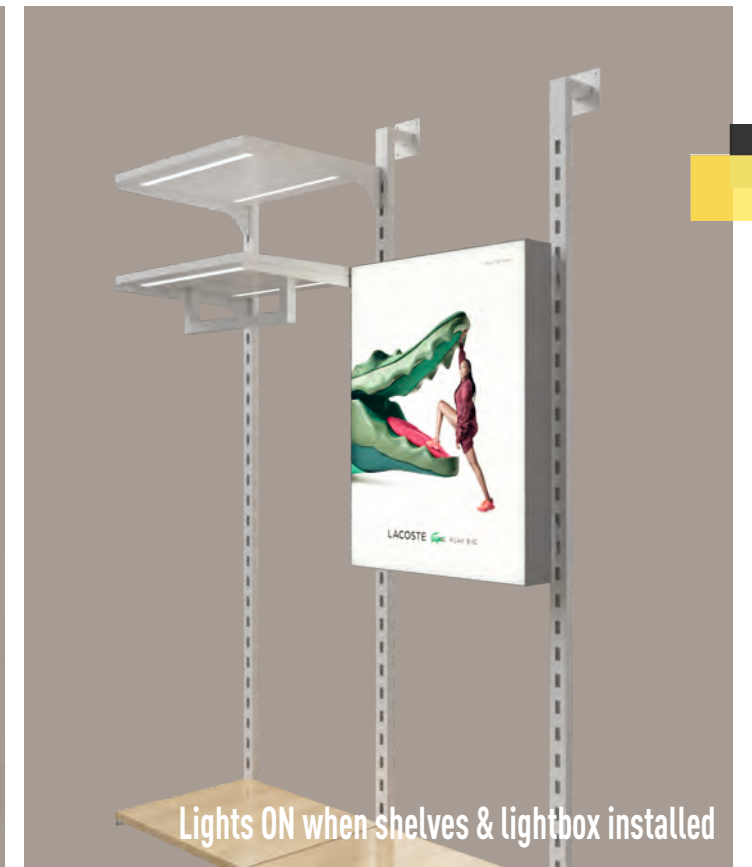
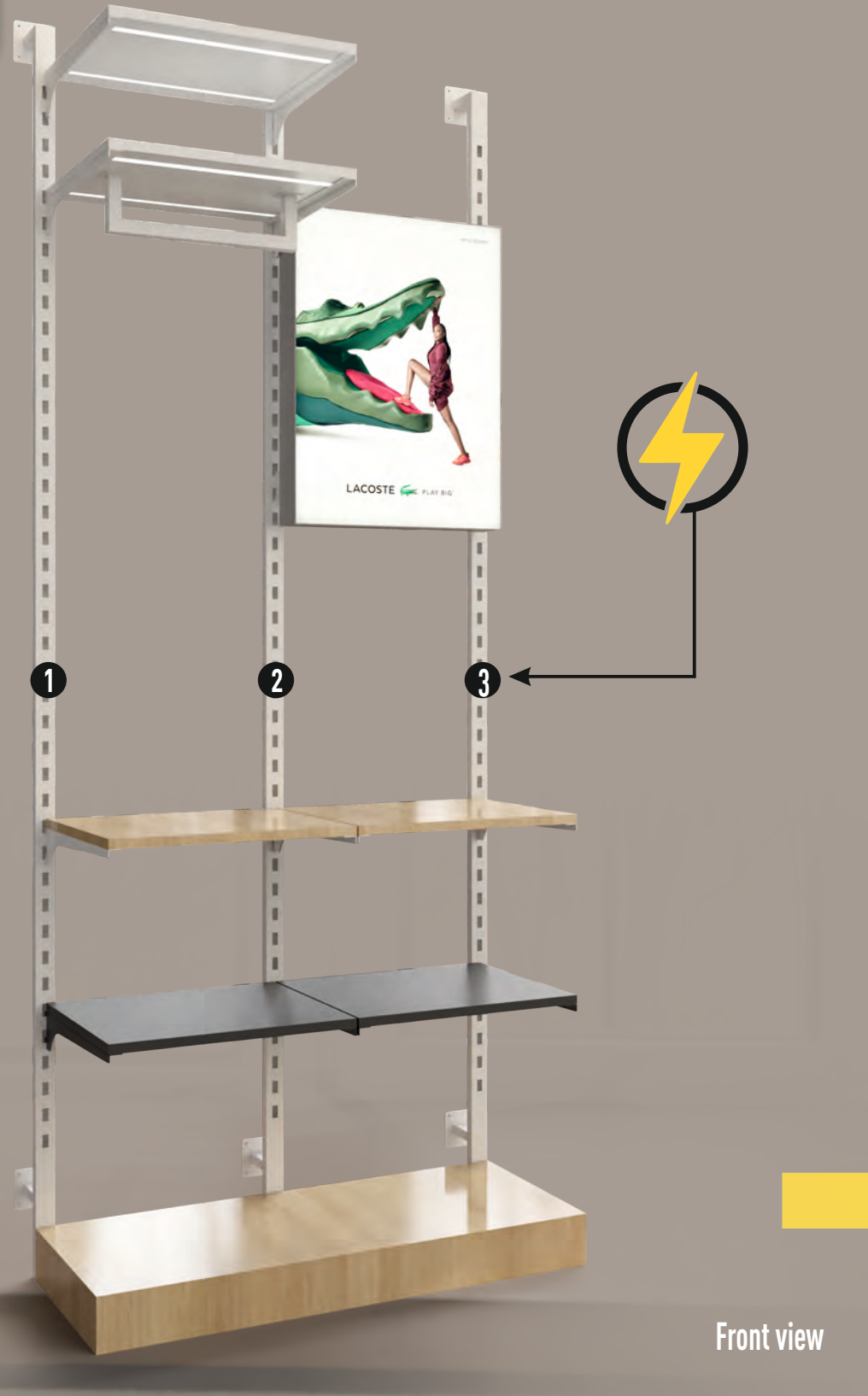
A space-efficient system fixed directly to walls, enabling clean layouts and maximum floor utilization while maintaining flexibility through modular components. Extensively used across brands like Mochi, Adidas, Anta, ABFRL-TCNS for structured and high-impact merchandise display.

Ceiling Suspended Metal Fixture



A contemporary display solution that uses suspended frameworks to create a lighter, more open retail environment while highlighting key merchandise zones. Seen in concept stores of Pepe Jeans and Perona where spatial openness and zoning are important.

Power Track (Wireless Electrified Fixture)



An advanced electrified track system that enables plug-and-play lighting and digital elements without visible wiring, offering unmatched flexibility for dynamic retail environments. Used in tech-forward stores like ABFRL-TCNS, Dr. Agrawal Eyecare, Metro Brand to support interactive and frequently evolving displays.

he



Showcasing our expertise in multi-material craftsmanship: We manufactured custom wood and metal fixture units for Home Essentials, supporting their growth from their first Gurgaon flagship to their first five completed stores within a year.





Trade Show 25-26



"I'm delighted to share my appreciation for the outstanding turnkey project execution delivered by HG Graphics. Your team showcased exceptional professionalism, high quality craftsmanship and ensured timely completion at every stage of the project. Working with HG has truly been a seamless experience. Your deep understanding of retail store setup - from bare shell to fully operational - makes you a dependable and trusted partner. It's been a pleasure collaborating with you and I look forward to many more successful projects together."

RAMESH MADDESHIYA
PROJECT HEAD
KEWAL KIRAN CLOTHING LIMITED



Custom-crafted fabrication and execution using precision-engineered wood and metal display systems. A seamless execution that translated Killer's 'youth fashion' identity into a premium trade experience.



crocs



"HG Graphics has been a professional and reliable partner in delivering required solutions. Their team has been responsive, ensuring smooth coordination and timely execution. We appreciate their efforts and look forward to continued collaboration."

BRIJESH BHATT
GM - PROJECTS & FACILITY



Executing the retail evolution of Crocs: We have manufactured and installed fixtures for over 35 stores, transitioning from the classic layout to the New Design Concept. Specialized in high-durability wood and metal hybrid units.



SWEET DREAMS

SWEET DREAMS

स्वीट ड्रीम्स



"Satisfied with your work and service. Keep up doing good work."

RITESH SARAOGI
CHIEF FINANCIAL OFFICER
S D RETAIL LTD.



SWEET DREAMS

www.sweetdreams.in



Expertly delivered retail solutions utilizing both Stainless Steel and MS Powder Coated fixture formats. This partnership highlights our versatility in high-end metal finishing and durable store display manufacturing.





Pan-India retail rollouts featuring custom wood and metal fixture systems. A scalable manufacturing partnership delivering consistent quality across their diverse women's fashion portfolio.





Custom fabrication for luxury stores and kiosks featuring a sophisticated mix of metal, stone, premium wood, and glass. A seamless execution that translates their avant-garde aesthetic into a high-end, multi-material retail experience.



Rose.



Ultra-luxury boutique fabrication featuring bespoke wood and precision metal units. An exquisite execution at India's premier luxury mall, reflecting the brand's high-end heritage jewellery identity.





Custom store fabrication featuring high-finish brass metal frames and premium wood cabinetry. A seamless execution at Phoenix Citadel Mall that translates the brand's luxury aesthetic into a sophisticated retail environment.

Hisense



Executing Pan-India retail rollouts with custom-engineered metal and wood Racks , Island units and Wall fixture solutions. Our nationwide delivery and execution ensures consistent manufacturing excellence and brand standards for these global electronics leaders.



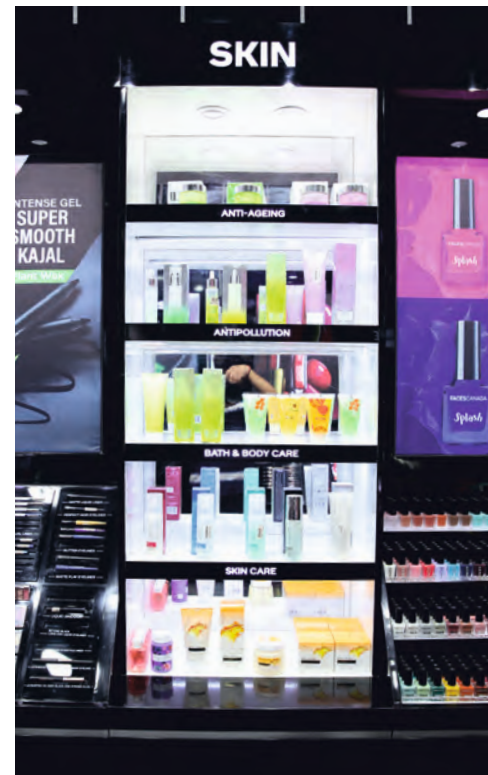
TOSHIBA



Executing Pan-India retail rollouts with custom-engineered metal and wood Racks , Island units and Wall fixture solutions. Our nationwide delivery and execution ensures consistent manufacturing excellence and brand standards for these global electronics leaders.



**FACES
CANADA**



We executed the turnkey manufacturing and installation of premium retail fixtures for Faces Canada, focusing on high-quality craftsmanship and precision. These custom-built units were engineered to optimize product visibility and ensure a seamless, durable brand presence in retail environments.



boAt

Retail shop

Quality, Reliability & Execution. Above comes to my mind when I look for a partner to execute the project. HG, a well known and reputed brand lives up to the expectations with an additional quality of having a great team. Thanks HG for helping us out in executing turnkey project of boAt office, boAt Retail store and Retail POSMs.

ANKUSH GUGLANI | NATIONAL SALES MANAGER | BOAT



Premium retail fabrication featuring signature wood-metal fixtures and immersive product experience zones. A high-impact execution that combines the iconic boAt logo with vibrant branding to deliver a "grounded" yet futuristic retail experience.



boAt

Hauz Khas Office



Complete design, fabrication, and execution of office fit-outs, including custom loose furniture and integrated metal-wood units. A seamless turnkey project translating boAt's high-energy culture into a modern, functional workspace.



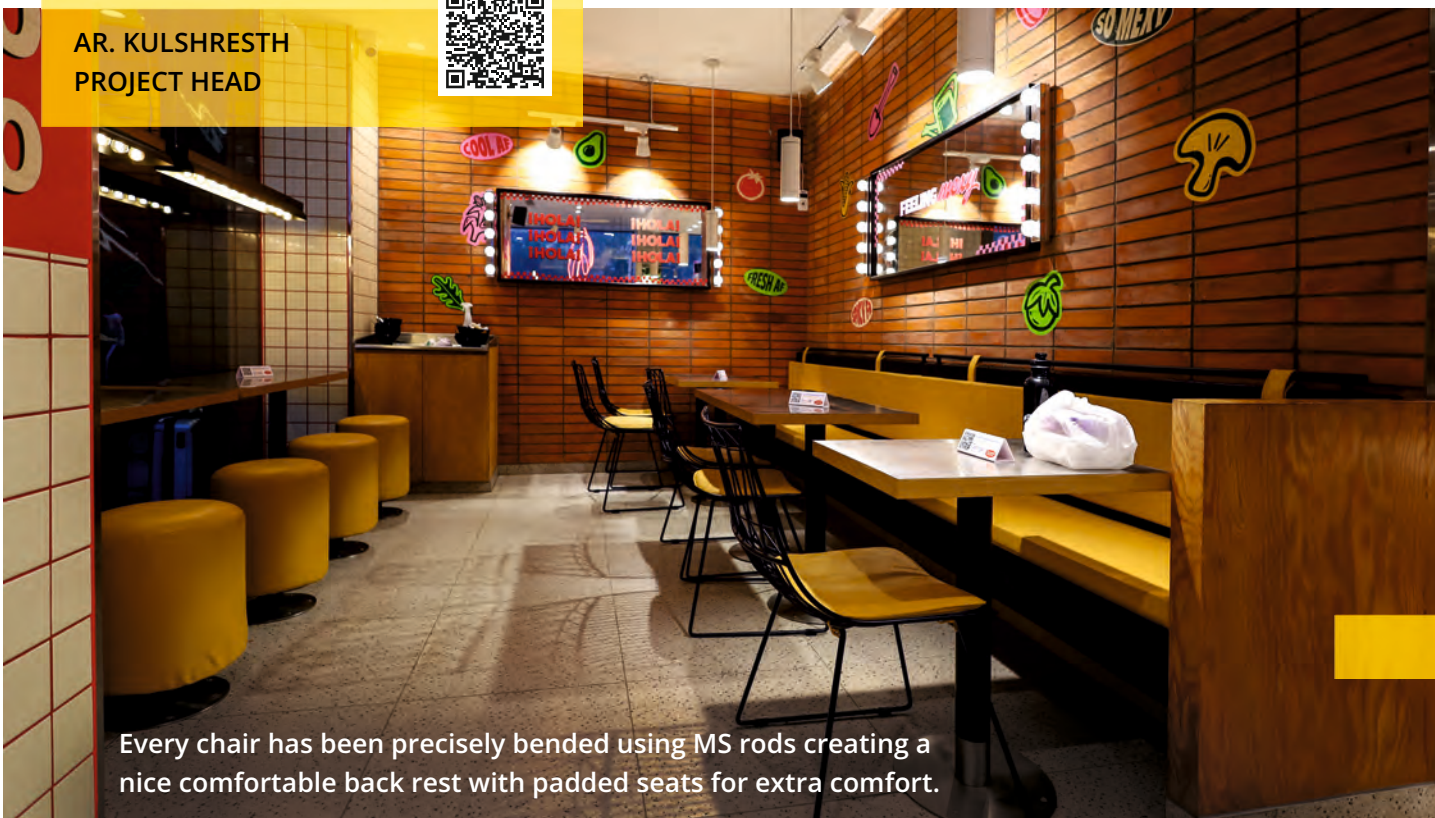
**CALIFORNIA
BURRITO**



"Great team to work with, always delivering top-notch quality signage. HG+ has a very accessible technical team with swift responses."

Each table top has been clad with Stainless Steel 304 grade with Mild Steel legs and SS base plates. Puffies has been customized as per the design.

AR. KULSHRESTH
PROJECT HEAD



Every chair has been precisely bended using MS rods creating a nice comfortable back rest with padded seats for extra comfort.

**COSTA
COFFEE**



Backwall has been the highlight, Parametric design has been precisely executed to create this flowing wavy effect.



Solid wood furniture. Railing in Mild Steel.



MONTBLANC



"I have known Harjee for over 25 years. He is always updated with new technologies and processes and ready to take new challenges. His knowledge, solution oriented approach and eye for detail makes him a great partner."

NEERAJ WALIA
MANAGING DIRECTOR & CEO



Quite detailed, durable and sturdy furniture, supplied in selected stores along with maintenance service.

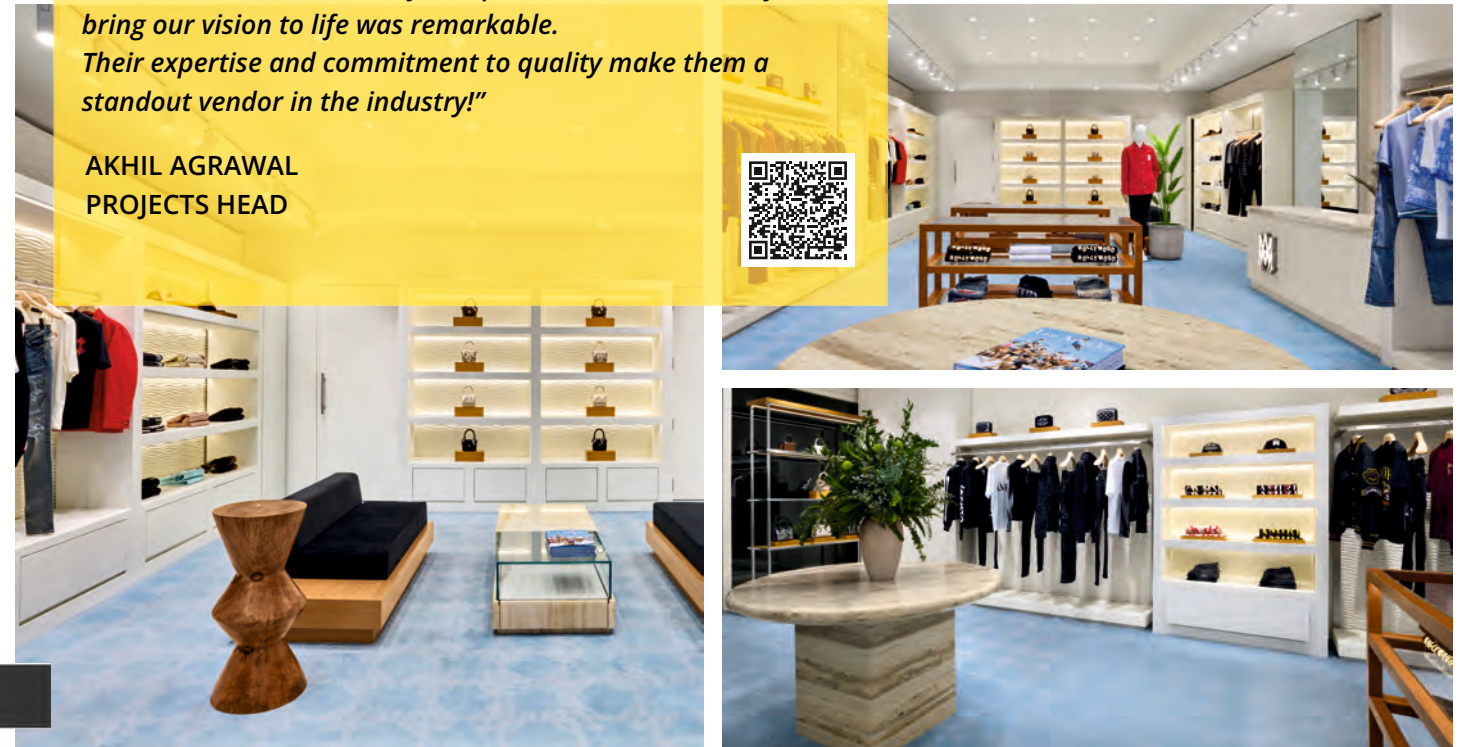


AMIRI



"We couldn't be more thrilled with the good work from HG Graphics! From quality signage and vibrant graphics for the Nike and Converse stores & furniture for Amiri, their team consistently delivered on our expectations at every step. Their attention to detail was truly exceptional, and their ability to bring our vision to life was remarkable. Their expertise and commitment to quality make them a standout vendor in the industry!"

AKHIL AGRAWAL
PROJECTS HEAD



This collaboration with one of the most prestigious brand was quite challenging. The detailing and materials involved were meticulously designed - from the customized wave pattern cut across the entire backwall paneling to the use of actual white onyx bianco ondulutte marble for the display table & cash counter and silver travertine marble for the round table 3D-cut lathe solid wood units, invisible channels in the glass drawers and many such more detailed specifications.





BURGER SINGH



"Working with HG Graphics has been a fantastic experience from start to finish. Their signage designs and furniture are not only visually stunning but also perfectly aligned with our brand identity. The quality of materials used is as per the brand specifications and the attention to detail is clear in every piece. I impressed by your customer service, quick responses, professional approach, and a genuine commitment to getting everything just right. I Highly recommend HG Graphics for anyone looking for reliable, high-quality signage and exceptional service."

SUBHASH MOHANRAJ
DGM-PROJECT



All tables are in laminated wood and chairs/stools are all Mild Steel powder coated as per the design.

We have successfully manufactured and installed complete furniture in over 150 stores across India.





"Heartfelt thanks to the HG Graphics team for your unwavering support and flawless execution across both store launches. Your incredible teamwork, dedication, and creativity brought our vision to life. The stunning outcome reflects your attention to detail, professionalism and commitment to excellence. Special appreciation to your site teams - their client handling skills were truly noteworthy. Your efforts have made these turnkey projects a real success and the transformation has been widely appreciated."

DEBJOY GHOSH
RDC - EAST

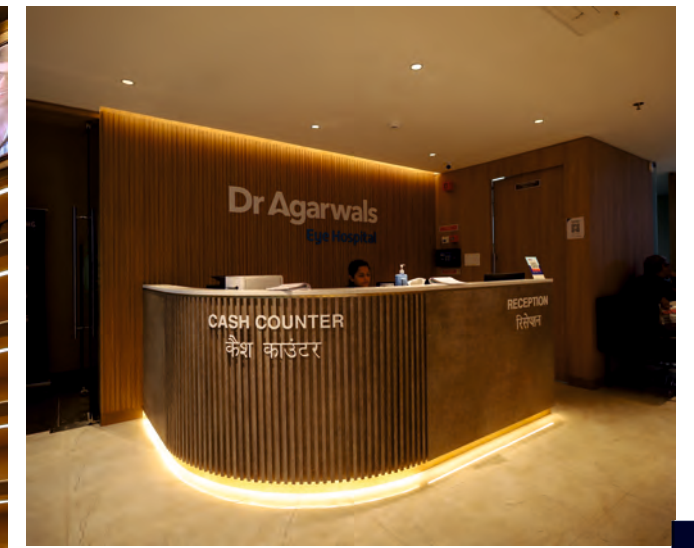


One of the extremely detailed project and we are proud to be associated with this esteemed brand.



"A decade of excellence, creativity, and reliability - HG Graphics has consistently delivered outstanding results in signage, facade and modular Furniture. Kudos to Harjee Gandhi and his dedicated team for their exceptional commitment to quality and workmanship. Wishing you continued success and many more milestones ahead."

DEVESH DUBEY
VICE PRESIDENT-PROJECTS & MAINTENANCE



Successfully delivered more than 20+ stores in less than 4 months and still continuing to do so..



COLORGAR



"The outcome of any task they are given at any given time will always be the same: "Swift and Flawless." HSAD/We have been connected for the last eight years and still are. Since then they have never said "no attitude," the team is always operating at peak efficiency.

HG is the answer to any problem. Association with someone like them is always wonderful!"

MOHIT KAIM
ACCOUNT DIRECTOR

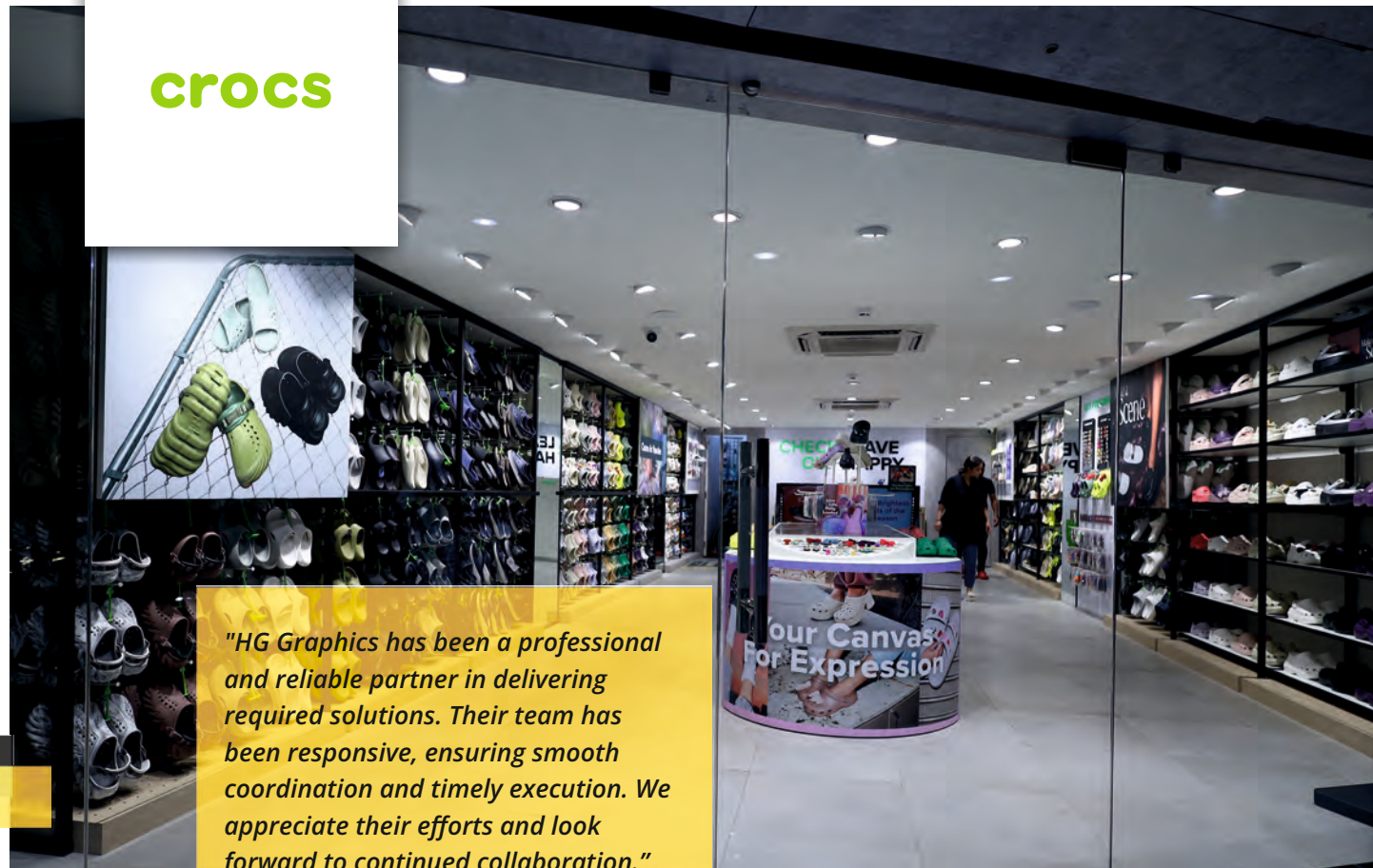


This brand always comes up with some unique ideas like pole dance, cage, 3d masks & lips, heart shape couch, etc. in very short span of time. We always live up to their expectations.

Proud to be a trusted partner with LG for over 8 years providing all kind of fixtures in Metal & Wood.



crocs



"HG Graphics has been a professional and reliable partner in delivering required solutions. Their team has been responsive, ensuring smooth coordination and timely execution. We appreciate their efforts and look forward to continued collaboration."

BRIJESH BHATT
GM - PROJECTS & FACILITY



We have successfully delivered complete store furniture and fixtures for more than 25+ stores in less than 2 years.

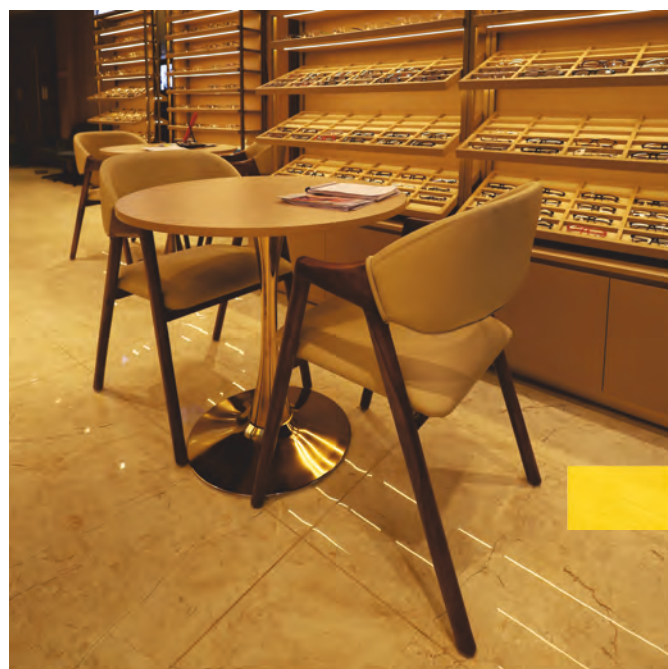
[RBL]¹⁰



For more than 10+ years, proud to accomplish fully customized all kind of Mall activations, launches, POP UP stores, etc. of various International brands.



MODULAR & LOOSE FURNITURE



OFFICE FURNITURE





DISCOVER MORE OF WHAT WE DO...

COYU



COLORBAR



all things baby



[RBL]¹⁰



boat



SOLETHREADS



D'YAVOL



UNI
QLO



McCain



LACOSTE



RED
CHIEF



OUTHOUSE



Size: 10ft x 3ft x 8ft.




Size: 10ft x 10ft x 8ft.



We are extensively experienced in manufacturing any kind of customized Carts, Kiosks, Highlight zone, Point of Sale material in any given specification at Pan India level.

VISUAL MERCHANDISING



We bring brands to life with striking visual merchandising and innovative displays that captivate and convert. With nearly three decades of expertise and a state-of-art manufacturing setup, covering 1,20,000 sq. ft. production area in Palwal (Delhi NCR) - We specialize in custom VM solutions. From immersive shop window displays to intricate in-store props and promotional elements, we craft high-impact visuals that enhance brand storytelling.

Our advanced infrastructure, featuring 3D printing, thermoforming, laser cutting and CNC routing, allows us to work with diverse materials like acrylic, MDF, ACP, Plexiglas and metal. Whether it's lenticular 3D graphics, fiber - molded figures or seasonal thematic décor, we design and deliver bespoke solutions tailored to every brand.

Trusted by leading retailers across India, our ISO - certified processes and skilled creative teams ensure timely, cost-effective and standout VM executions that drive engagement and elevate in-store experiences.





"HG Graphics has been a great support to LV India for almost 10 years! The quality of work and the services extended, have been more than asked for! We wish to choose their services for years to come."

HINNA BEHEL
VISUAL MERCHANDISER



"I have known Harjee for over 25 years. He is always updated with new technologies and processes and ready to take new challenges. His knowledge, solution oriented approach and eye for detail makes him a great partner."

NEERAJ WALIA
MANAGING DIRECTOR & CEO



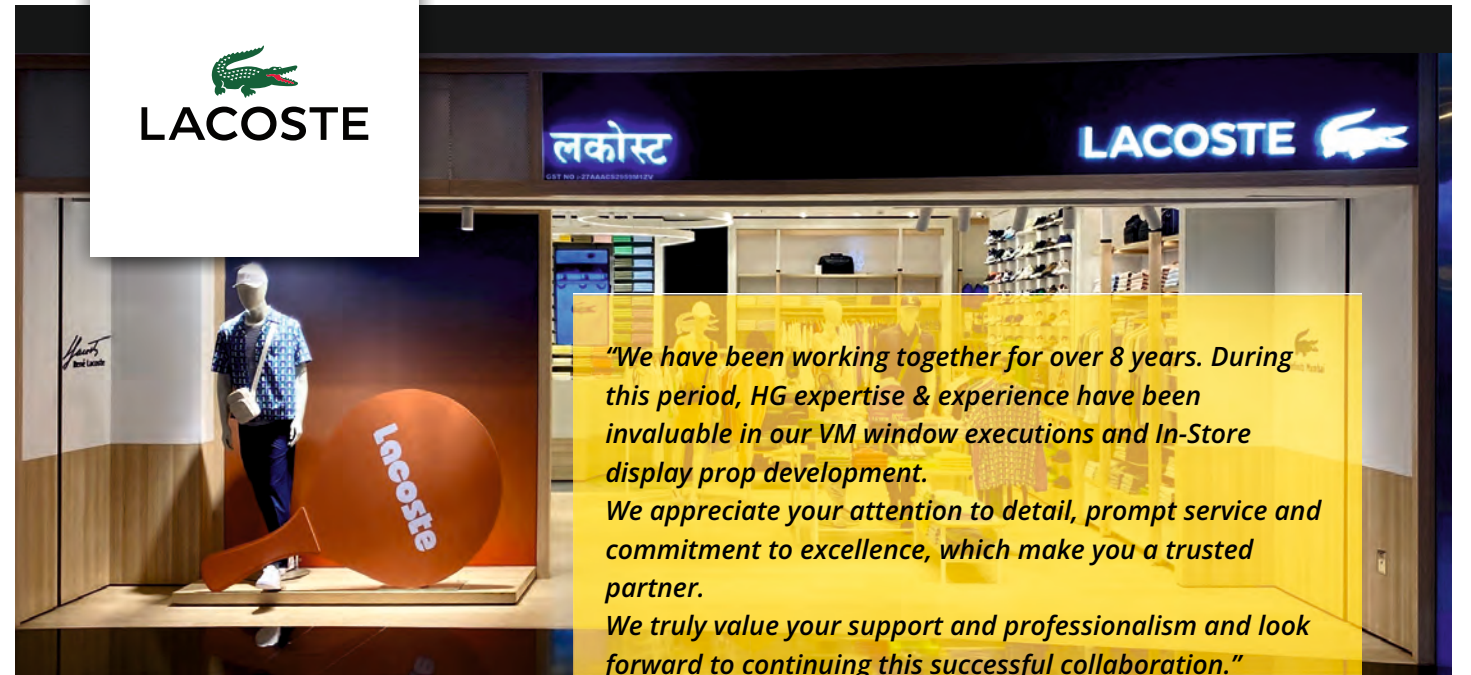


FLAT 50% OFF*
ON PURCHASE OF 2

Actual life size 3d printed shoe.

"Working with HG Graphics is a pleasure. Their execution and management were top-notch, showing exceptional professionalism throughout. The high-quality work exceeded expectations, with every detail handled with care. Their ability to meet deadlines while maintaining design and functionality standards was impressive. A fantastic partner - we highly recommend them!"

DIVYATA RASTOGI
VM HEAD



"We have been working together for over 8 years. During this period, HG expertise & experience have been invaluable in our VM window executions and In-Store display prop development. We appreciate your attention to detail, prompt service and commitment to excellence, which make you a trusted partner. We truly value your support and professionalism and look forward to continuing this successful collaboration."

CHINTESH KUMAR
MANAGER VM





"PUMA deeply appreciates your organization's exceptional work and dedication. Your team's professionalism, reliability and attention to detail have been outstanding, especially in meeting tight deadlines and executing high-quality visual merchandising. Special thanks to Vipin & Noor for their remarkable support. Wishing your team continued success, and we look forward to a strong and enduring partnership ahead."

RAHUL GAUTAM
REGIONAL VISUAL MERCHANDISER



ULTRABOOST 5

"I am always amazed with the outstanding service HG GRAPHICS team provides. The quality of the prints and fabrications has always exceeded my expectations. HG Graphic teams professionalism and dedication to delivering high-quality products are evident in their final results."

RUCHIKA SHRIVASTAVA
MARKETING HEAD



TOMMY HILFIGER



"We have partnered for the past 8 years, and I deeply value the professionalism and expertise consistently displayed by your team. As we approach the end of the fiscal year, I am delighted to share our positive experience. Your team's dedication and creativity have played a crucial role in delivering exceptional visual merchandising solutions for TOMMY HILFIGER.

Thank you once again for your unwavering dedication and hard work. I eagerly anticipate our continued successful partnership."

ANUPAM RAI
NORTH HEAD VM

MID-SEASON PROMOTION
Flat 30% off
Flat 20% off



LOUIS PHILIPPE



"Working with HG Graphics has been a fantastic experience; it truly felt like an extension of our own team. The communication part is excellent; the team is always responsive to our needs and actively collaborates with us throughout the entire process. We value the expertise and commitment to understanding our brand and our audience. The hands-on approach and ability to adapt to changing needs make the HG team stand out in the industry."

PRATEEK AGRAWAL
VM REGIONAL



HACKETT
LONDON

HACKETT
LONDON



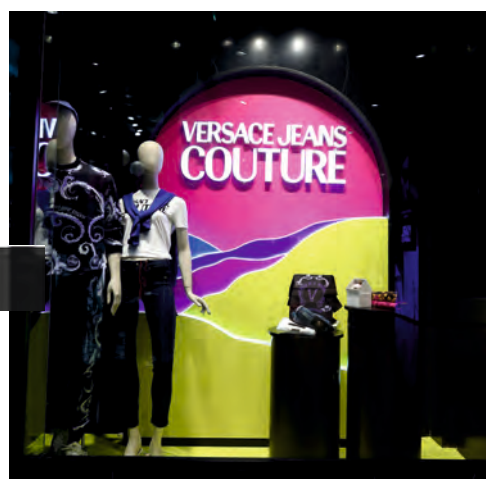
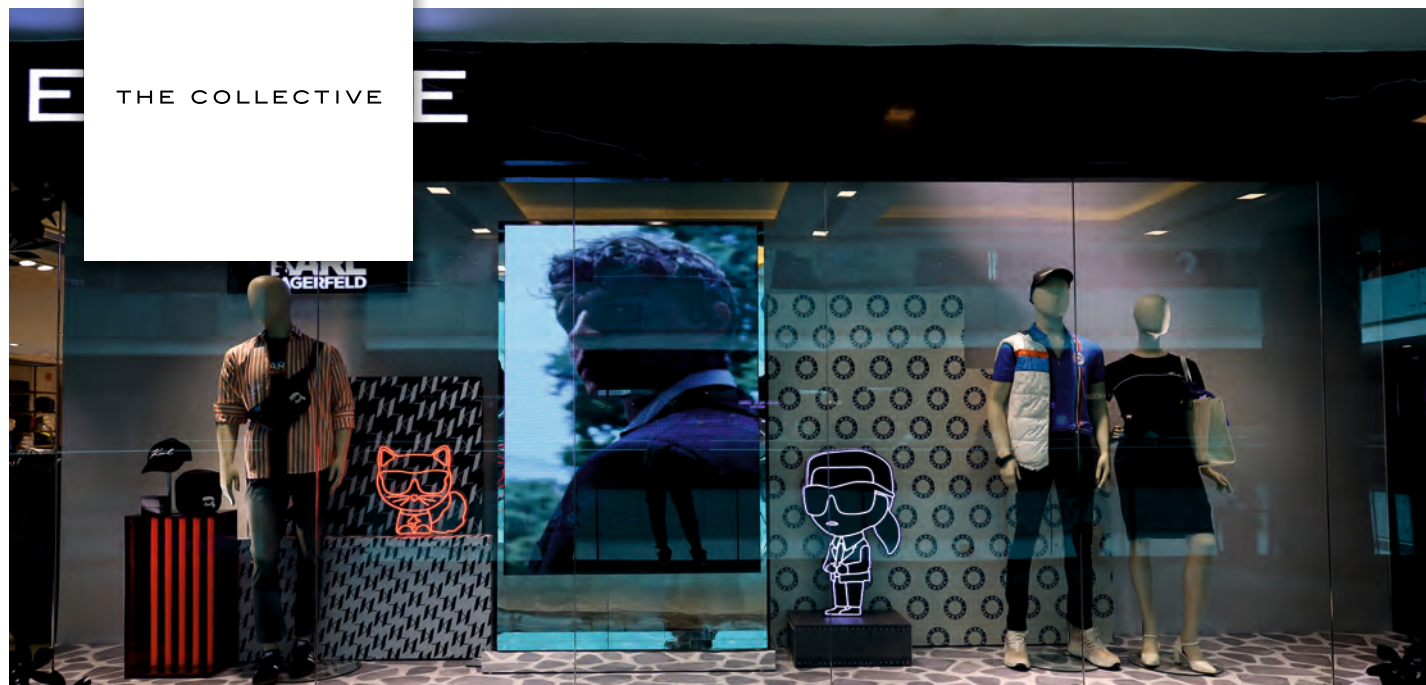
"It is great working with HG Graphics on a lot of GTM window execution and instore requirements. It has been a pleasant experience where a lot of requirements have been met timely, maintaining quality and standards. I wish HG team all the best."

AWANISH
VM HEAD



POLO SHIRT

POLO SHIRT





"HG Graphics has been an invaluable partner in our VM journey. Their innovative ideas, remarkable production capacity and flawless execution - despite tight deadlines - consistently elevate our projects. With unmatched professionalism, precision and dedication to quality, they stand apart as a trusted, skilled vendor we truly value and wholeheartedly recommend."

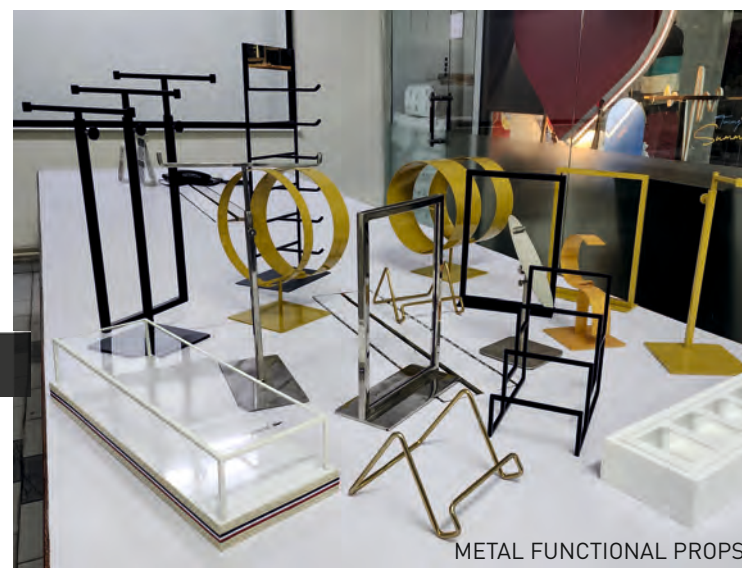
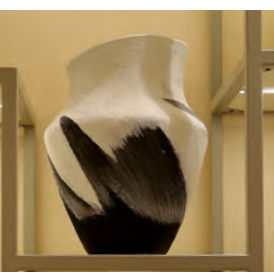
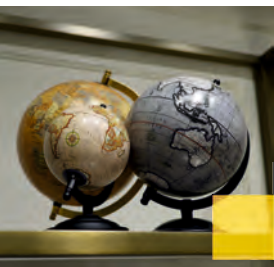
ADITI ANAND
VM-HEAD



asics



INNOVATIVE PROPS



METAL FUNCTIONAL PROPS



FACADE & SIGNAGES



We are industry leaders in crafting high-impact facades and signage that elevate brand presence and architectural identity. With a legacy dating back to 1996, our new setup is now 1,20,000+ sq. ft manufacturing facility a state-of-the-art unit in Palwal (Delhi NCR).

Specializing in premium-quality facade, external, internal, mandatory, Fire NOC signages and wayfinding signage, we use advanced German and Japanese machinery to deliver customized solutions. From illuminated channel letters, pylons and totem signs to large-format acrylic, ACP and metal fascia branding, our signage combines durability, aesthetics and weather resistance.

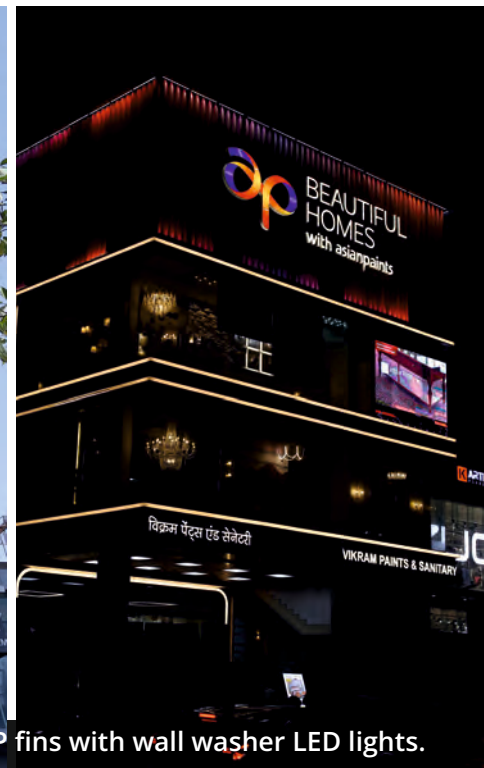
Our in-house expertise—including laser spot welding, automated letter bending (TPS), UV and eco-solvent printing with powder coating—ensures precision-engineered signage that stands out both day and night. Backed by a team of 480+ skilled professionals, we execute comprehensive signage projects across retail, malls, hospitals, corporate parks and infrastructure developments in India and beyond.

With ISO certification and 3M-authorized processes, we guarantee impactful, sustainable and long-lasting signage solutions that make a statement.





3d cut letters on painted ACP fins with wall washer LED lights.



Stainless steel, ceiling suspended lit signage.



3M vinyl pasted on side aluminium channel letters as per the design.



Customized perforated aluminum sheet with 3d cut letters and active led screen.



Aluminum laser cut halo effect.



Ceiling suspended LED sign.



3d cut letters on aluminum fins.



Exterior grade Aluminum powder coated LED Signage.



Flat Aluminium channel letters with coloured acrylic.





Double illumination - aluminum + acrylic signage.



Mirror finish SS laser cut.



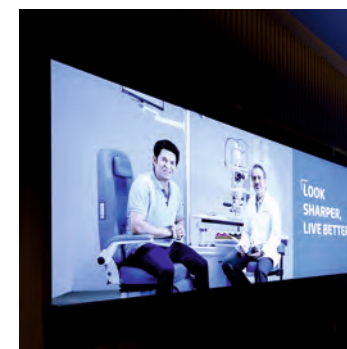
Reflective mirror facade with extruded aluminum profile and LED. Entry gate portal in ACP & LED.



Aluminum raising halo lit.



Black & white acrylic LED letters creating halo effect.



"A decade of excellence, creativity and reliability - HG Graphics has consistently delivered outstanding results in signage, facade and modular Furniture. Kudos to Harjee Gandhi and his dedicated team for their exceptional commitment to quality and workmanship. Wishing you continued success and many more milestones ahead."

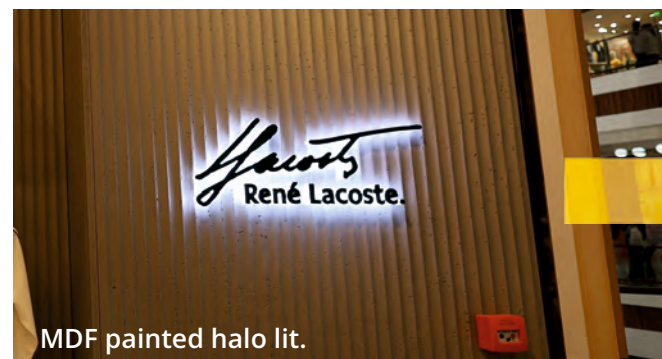
DEVESH DUBEY
VP-PROJECTS &
MAINTENANCE



Extruded Aluminum section perpendicular sign.



Golden Brushed finished SS lit letter with collar.



MDF painted halo lit.



DrA - LED 3D cut letters on ACP.
ENTRY - Router cut on ACP.





Burma Teak ACP with aluminum powder coated LED signage.



Ceiling suspended LED signage on Acrylic.



Profile light on facade with SS ceiling suspended sign.



3d LED letters directly fixed on glass.



High-rise 80feet double sided totem



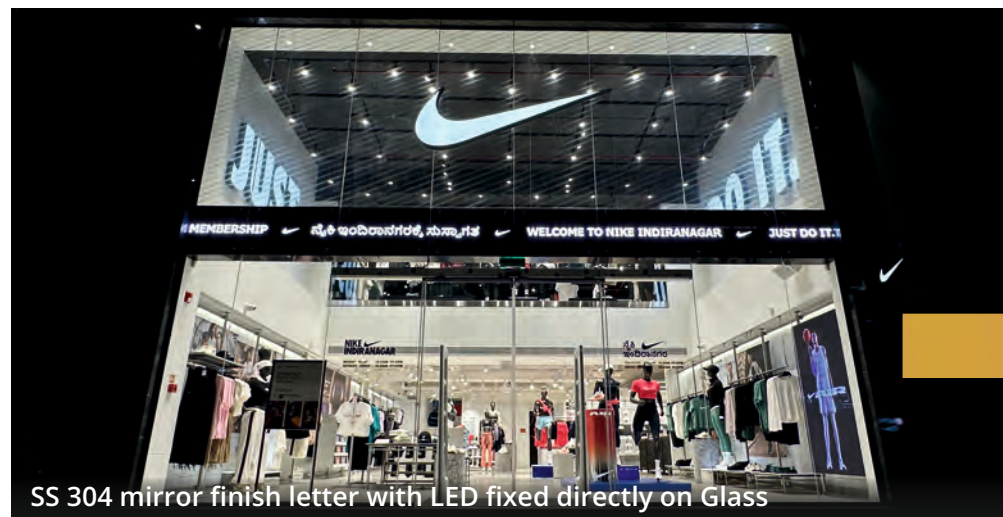
MS powder coated letters with LED with SS frame.



Wooden louvers with LED cut letters.



3d LED letters directly fixed on glass.



SS 304 mirror finish letter with LED fixed directly on Glass

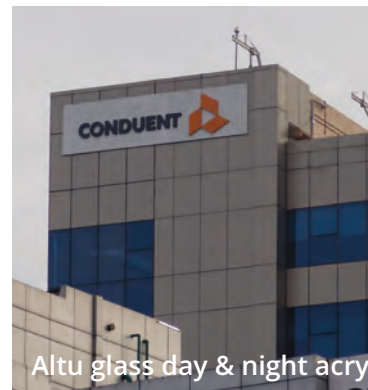
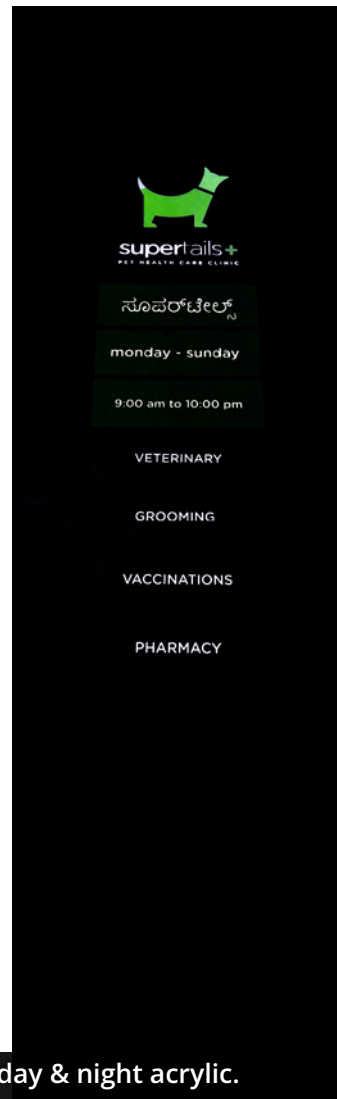


UV printed dots on Acrylic + 3D led cut letters With aluminum 50x50 BPC pipe border.





ACP totem with altuglas day & night acrylic.



Altu glass day & night acrylic signage.



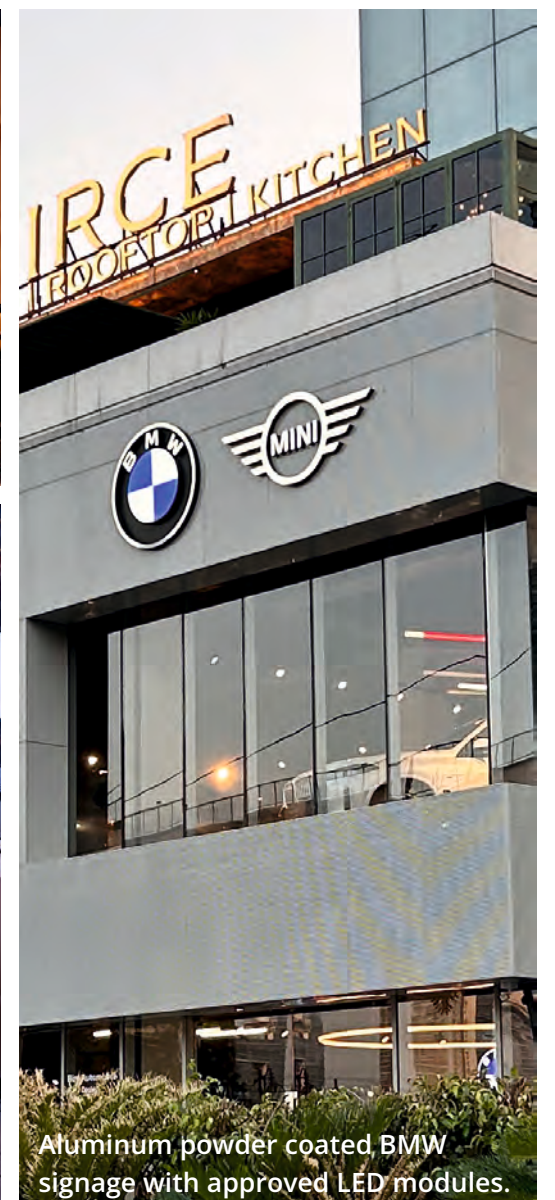
3M patented chrome vinyl with day & night effect.



Double ACP router cut signage with matt gold aluminum powder coated letters.



Solid acrylic laser cut on wall.



Aluminum powder coated BMW signage with approved LED modules.

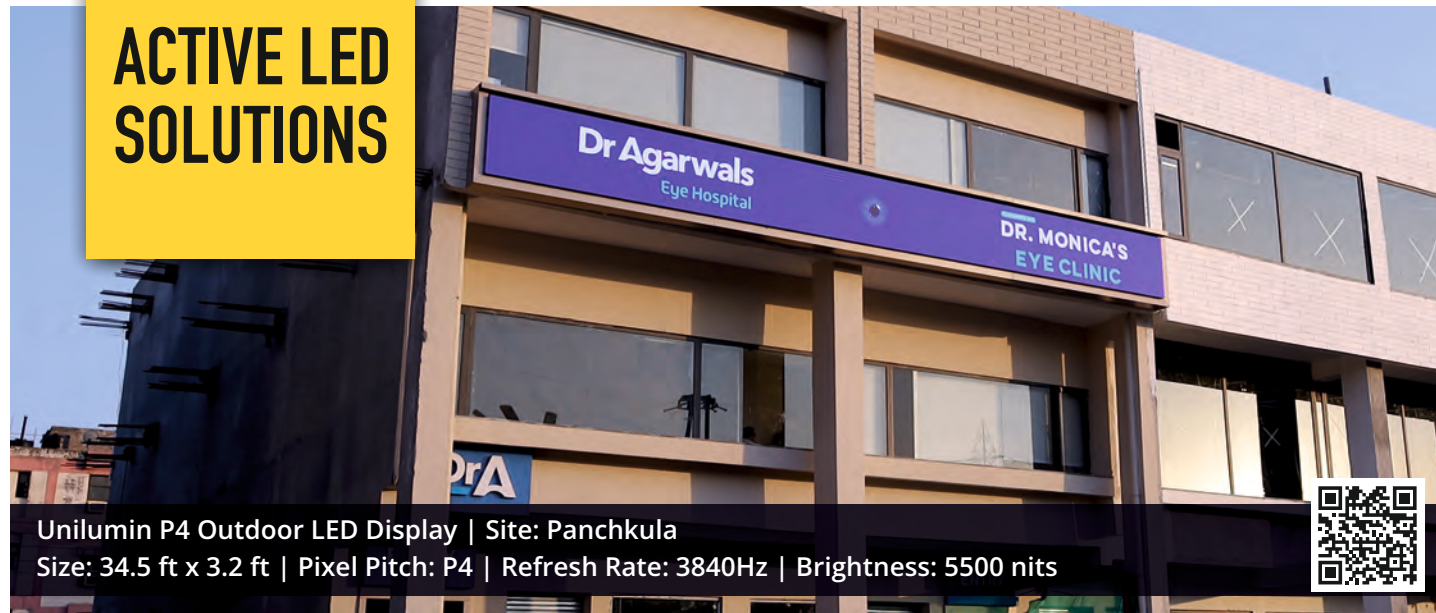


Laser cut customized pattern in aluminum + powder coated. Mirror copper finish aluminum letters with LED.



3D effect aluminum channel letters.

ACTIVE LED SOLUTIONS



Unilumin P4 Outdoor LED Display | Site: Panchkula
Size: 34.5 ft x 3.2 ft | Pixel Pitch: P4 | Refresh Rate: 3840Hz | Brightness: 5500 nits



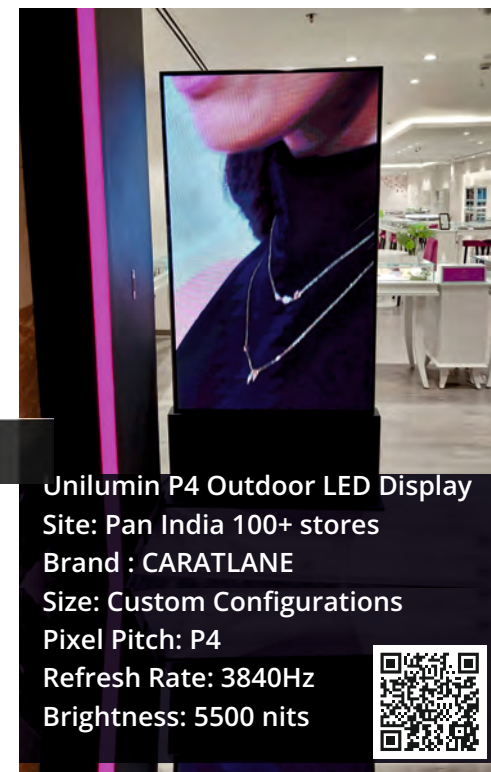
Unilumin P4 Outdoor LED Display | Site: Vashi
Size: 25 ft x 5.2 ft | Pixel Pitch: P4 | Refresh Rate: 3840Hz | Brightness: 5500 nits



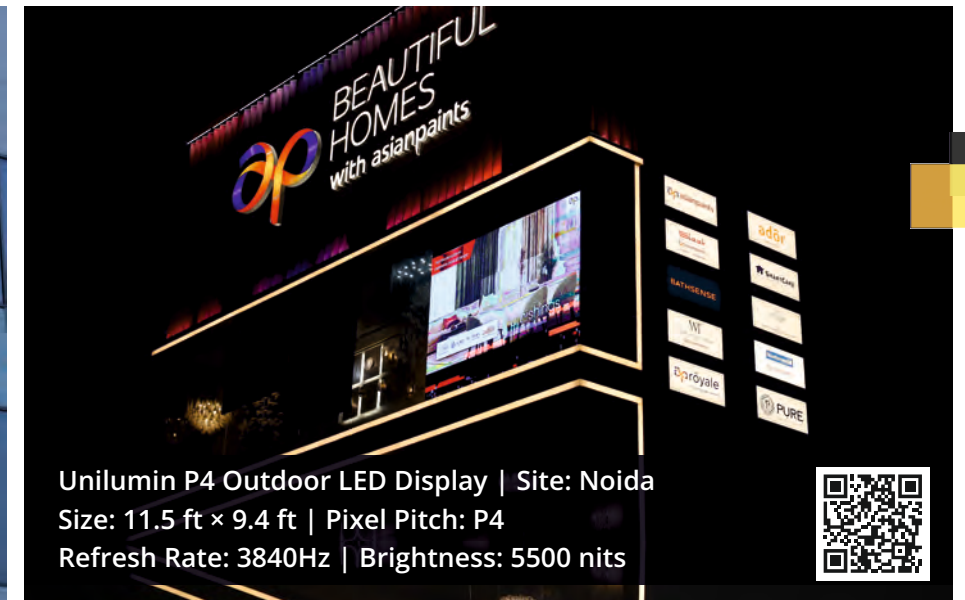
Unilumin P4 Outdoor LED Display | Site: Virar
Size: 25 ft x 6.2 ft | Pixel Pitch: P4 | Refresh Rate: 3840Hz | Brightness: 5500 nits



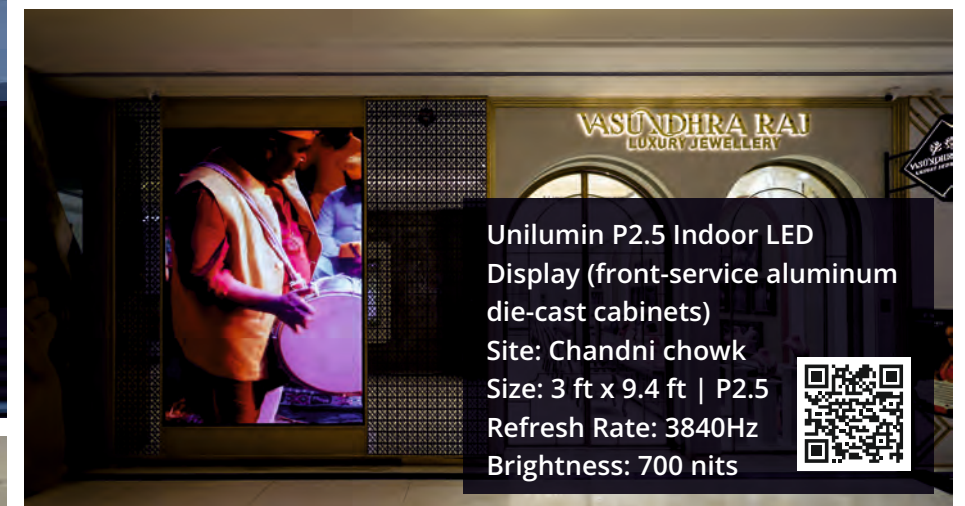
Unilumin P4.4 Outdoor LED Display (front-service aluminum die-cast cabinets)
Site: Noida Sec 18
Size: 9.4 ft x 18.8 ft | P4.4
Refresh Rate: 3840Hz
Brightness: 6500 nits



Unilumin P4 Outdoor LED Display
Site: Pan India 100+ stores
Brand : CARATLANE
Size: Custom Configurations
Pixel Pitch: P4
Refresh Rate: 3840Hz
Brightness: 5500 nits



Unilumin P4 Outdoor LED Display | Site: Noida
Size: 11.5 ft x 9.4 ft | Pixel Pitch: P4
Refresh Rate: 3840Hz | Brightness: 5500 nits



Unilumin P2.5 Indoor LED Display (front-service aluminum die-cast cabinets)
Site: Chandni chowk
Size: 3 ft x 9.4 ft | P2.5
Refresh Rate: 3840Hz
Brightness: 700 nits



Absen P4.4 Outdoor LED Display (front-service aluminum die-cast cabinets) | Site: Bangalore
Size: 12.5 ft x 6.2 ft | Pixel Pitch: P4.4
Refresh Rate: 3840Hz | Brightness: 6000 nits



GRAPHICS SOLUTIONS



70mm fabric lightbox



Iridescent film pasted on clear acrylic.



Fabric UV print



Direct UV printing on Powder Coated Metal sheet.



Latex vinyl print



Blockout fabric UV print



Customized Wallpaper printing



3M vinyl printing



Anti-Scratch Coating



Clear Gloss Varnish Printing



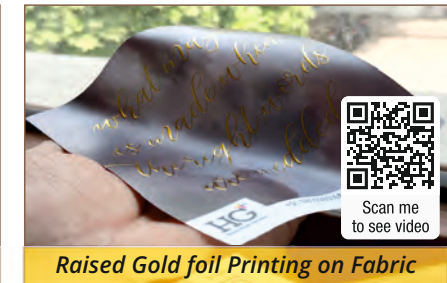
Raised Gold Foiling on Glass with Reverse UV Printing



Coloured UV Raised Foil Printing



Raised Gold foil with UV Printing



Raised Gold foil Printing on Fabric



Raised Braille Signages



Raised Copper Foil Printing



Raised Iridescent Foil Printing



Raised Silver Foil Printing



Raised Gold Foil Printing on Dark Wood

RAISED UV METALLIC FOIL PRINTING

WAYFINDING PROJECTS



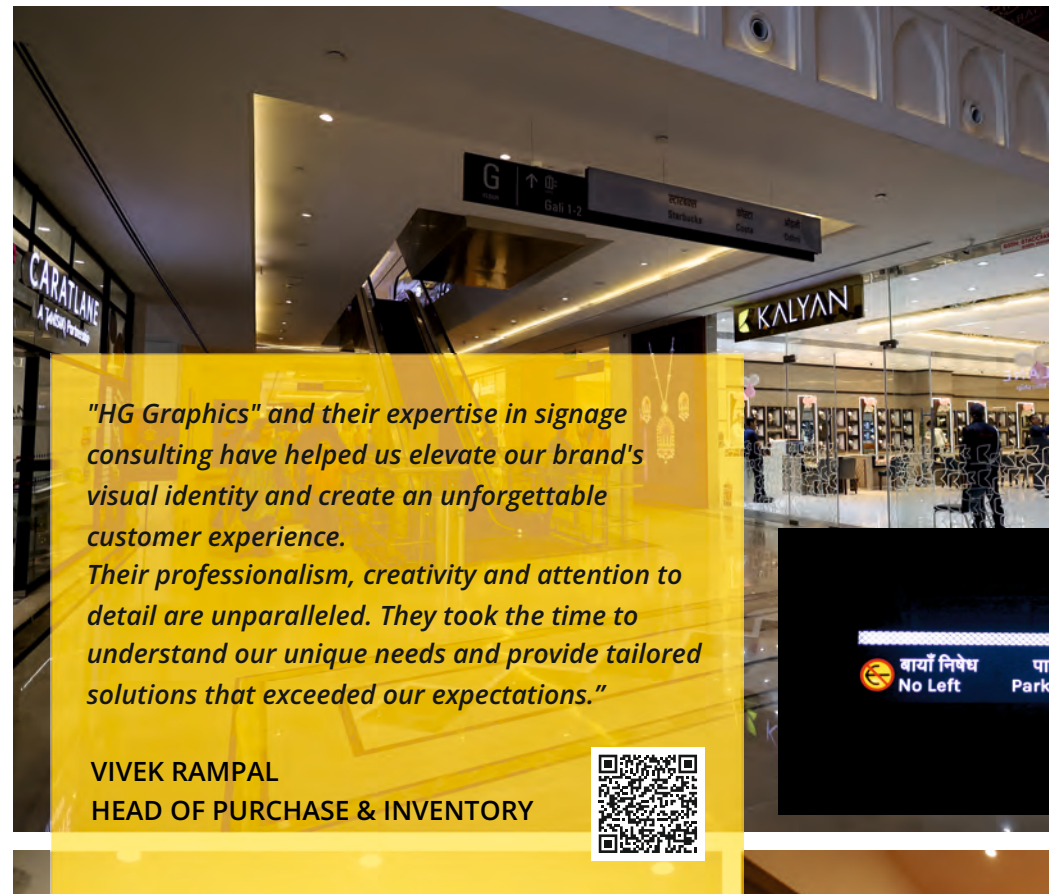
We specialize in designing, manufacturing and implementing comprehensive wayfinding and architectural navigation systems that enhance user experience, accessibility and spatial clarity. Our solutions are meticulously crafted to guide, inform and regulate movement in complex environments such as malls, MLCPs, hospitals, IT parks, ports, corporate campuses and transportation hubs.

From identification signages like situational signs and utility signs to directional signages with floor plans and routing systems, we offer a full range of solutions including informational displays, regulatory signage, facade signs, parking signs, BOH, Floor markings & Wall graphics and emergency/fire safety visuals ensuring compliance with NBC norms & seamlessly integrated with the aesthetics of each space.

With our state-of-the-art manufacturing facilities - spanning 1,20,000 sq. ft. unit in Palwal (Delhi NCR), we leverage advanced German and Japanese technology to produce precision signage in acrylic, metal, glass, vinyl and more. Our facility also features raised UV and Braille capabilities, ensuring compliance with accessibility standards.

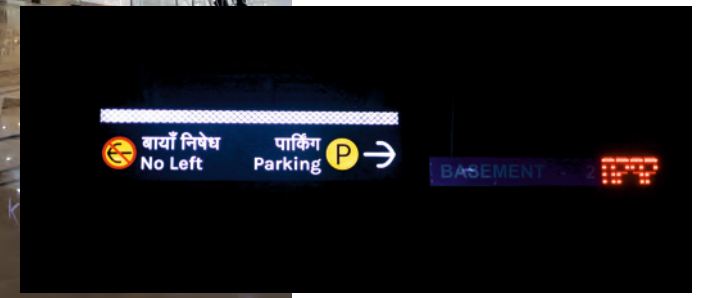
Backed by a team of 480+ skilled professionals and ISO-certified processes, HG Graphics ensures seamless project execution-from planning and prototyping to onsite installation. Delivering clarity, compliance and visual harmony across diverse environments.





"HG Graphics" and their expertise in signage consulting have helped us elevate our brand's visual identity and create an unforgettable customer experience. Their professionalism, creativity and attention to detail are unparalleled. They took the time to understand our unique needs and provide tailored solutions that exceeded our expectations."

VIVEK RAMPAL
HEAD OF PURCHASE & INVENTORY

High rise Totem of 40feet is a dynamic Signage. Engineered ergonomically for its changeability feature & structurally vetted for all natural challenges by certified structural consultant.

In The Heart Of Asia's oldest, largest and busiest wholesale and retail hub Chandni Chowk in Delhi, we are proud to deliver the Signage system for The Next-generation Shopping Destination Omaxe Chowk. Sign theme is specifically designed to keep the spirit alive of the traditional local market shopping experience.





"HG Graphics Pvt Ltd. has been an invaluable partner in our branding journey. We have done various projects with them in the past and are looking forward to more to come. Their expertise in designing and executing visually stunning, durable signage helped elevate our brand presence. With exceptional professionalism, creativity, and attention to detail, they translated our vision into impactful solutions - delivered on time and within budget. We highly recommend them to businesses aiming to make a lasting impression for the WAY FINDING & FACADE Signage Solutions."

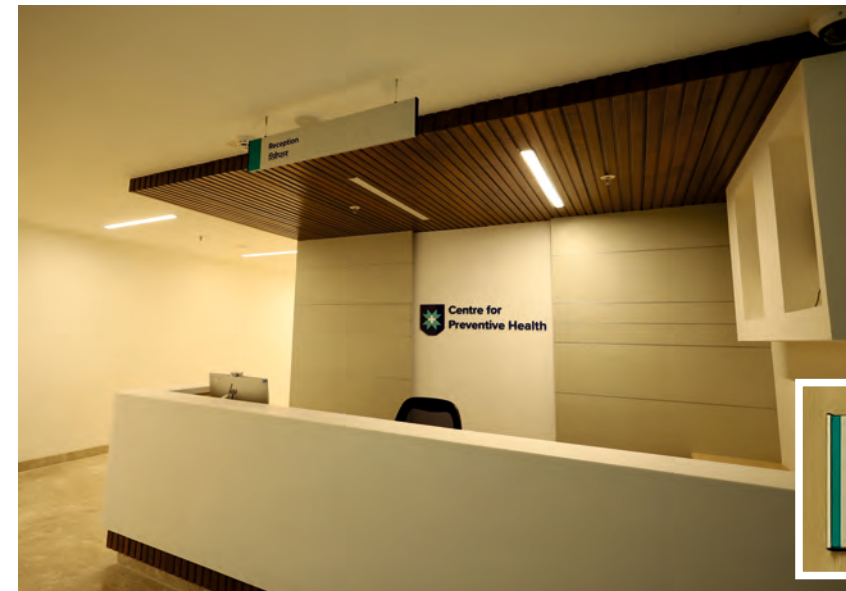
MAYANK MATHUR
CHIEF MARKETING OFFICER



Top notch MAX Hospital facade letters are made with unique customization having dual shades i.e **BLUE** in day and **WHITE** in Night. All letters are Modular for future accessibility.



"Modular signage system—versatile, adaptive and engineered for seamless navigation."

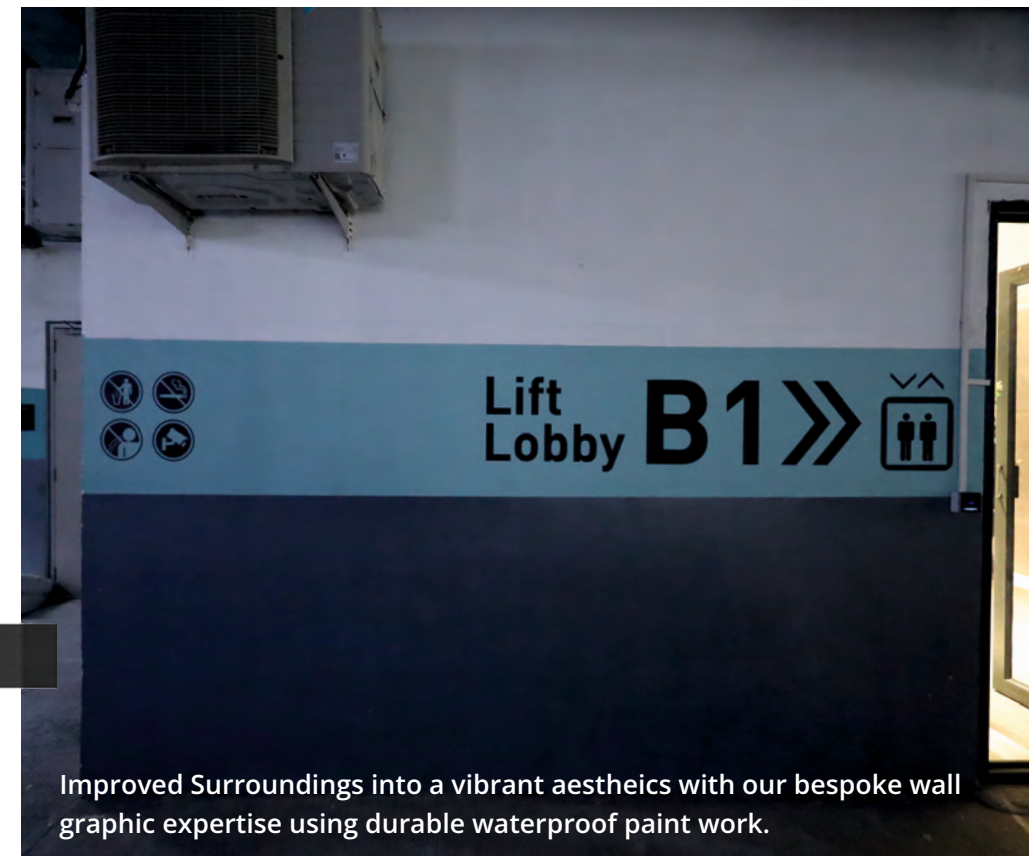


"Thrilled to partner with MAX Healthcare, delivering innovative wayfinding signages across key locations including Dwarka, Nagpur, Lucknow, Noida, Mohali .. and more under process!"





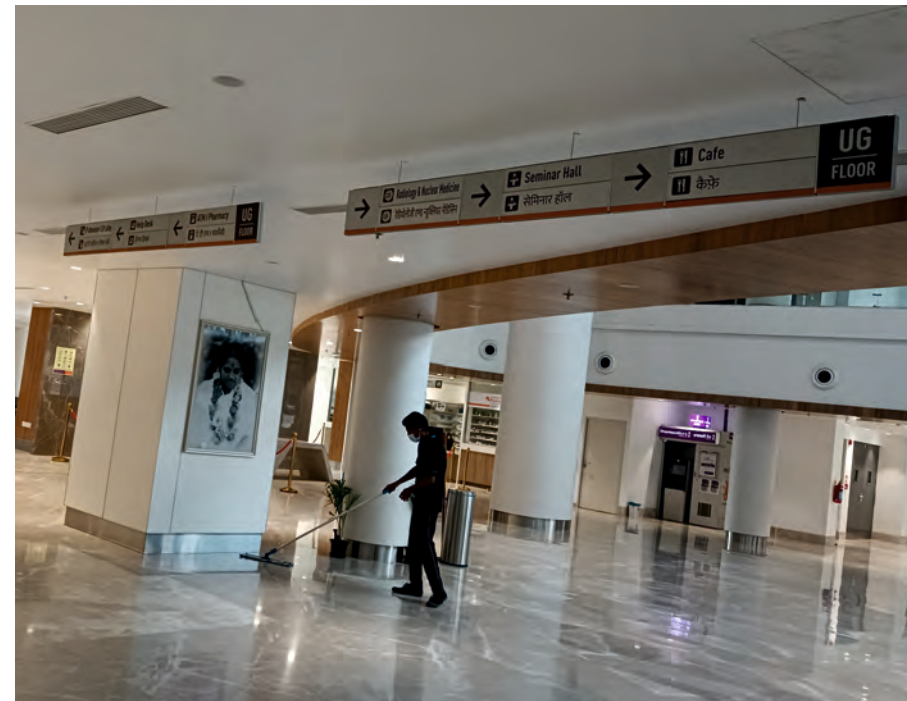
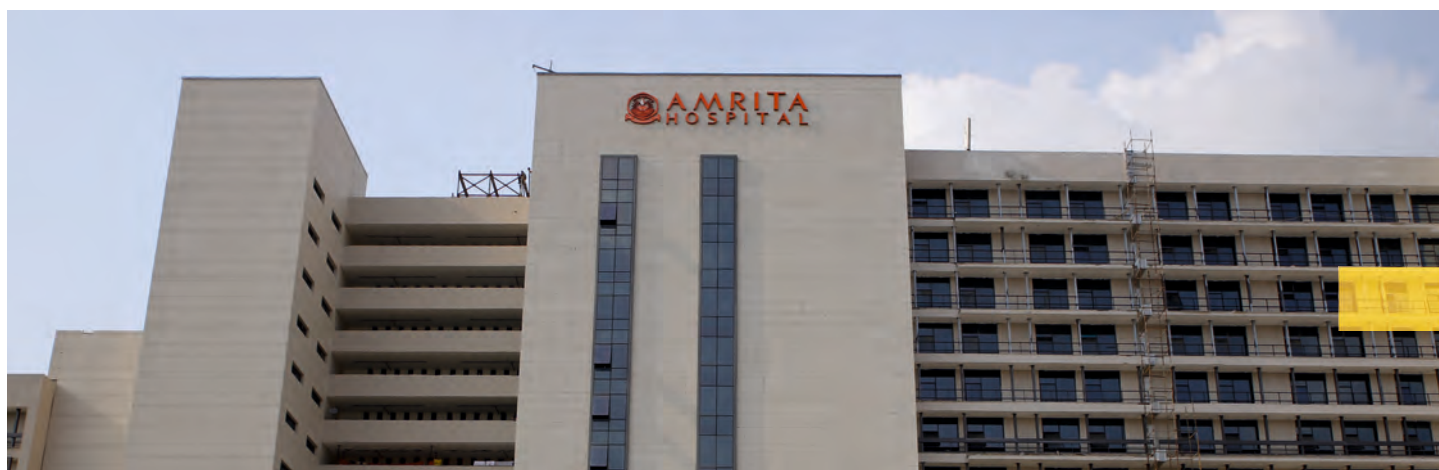
"Drive clarity and safety with our durable weatherproof high-visibility thermoplastic parking markings - engineered to withstand every challenge."



Improved Surroundings into a vibrant aesthetics with our bespoke wall graphic expertise using durable waterproof paint work.



"Lighting the path to success - our innovative wayfinding signages are now guiding the way at Good Earth Infra!"



"Navigating every step with precision - our well-planned wayfinding system seamlessly guides the crowd at Amrita Hospital."



I have had the distinct pleasure of working with HG Graphics Pvt. Ltd. on numerous occasions. Their expertise and professionalism are truly remarkable. Whether it's managing complex tasks or offering valuable insights into project development, they consistently deliver outstanding results. The unwavering commitment to quality and dedication to their work make HG a significant asset to any team or project they are associated with. I highly recommend their services for wayfinding and other signage solutions.

RAJEEV
SR. GENERAL MANAGER



"Our seamless navigation system with customised wayfinding signages is now connecting both residential and commercial spaces at Smartworld Orchard!"

Customised signages featuring raised UV printing and metal foiling technology for a finish that's both striking and resilient.



Felix PLAZA



"Happy to serve Felix Plaza with our high-end signage system that transforms every space into an experience of distinction!"



"We had a great experience working with HG Graphics on the signage for our project. They were professional, reliable and the quality of the signs was excellent. The team made the process easy and the final result looks amazing. We highly recommend HG Graphics and look forward to working with them again."

DIKSHA ARORA
DEPUTY MANAGER-ARCHITECT

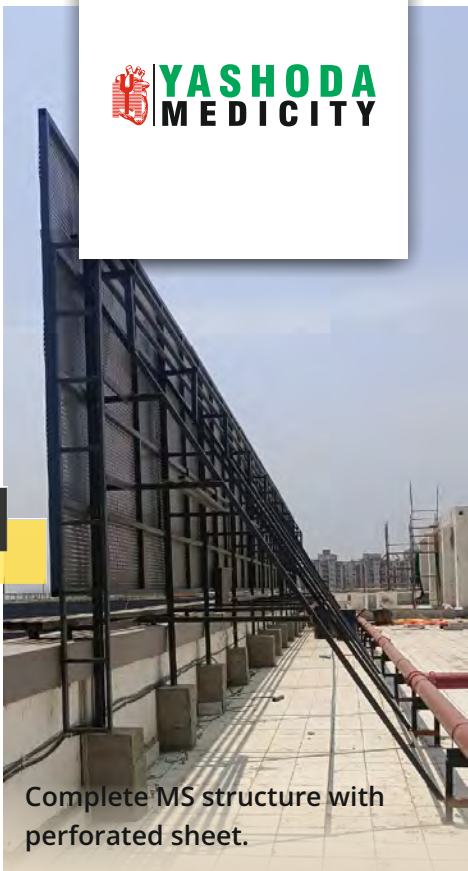


High rise Totem of 42 feet is a TRIANGULAR structure made in a set of 3 parallel units.

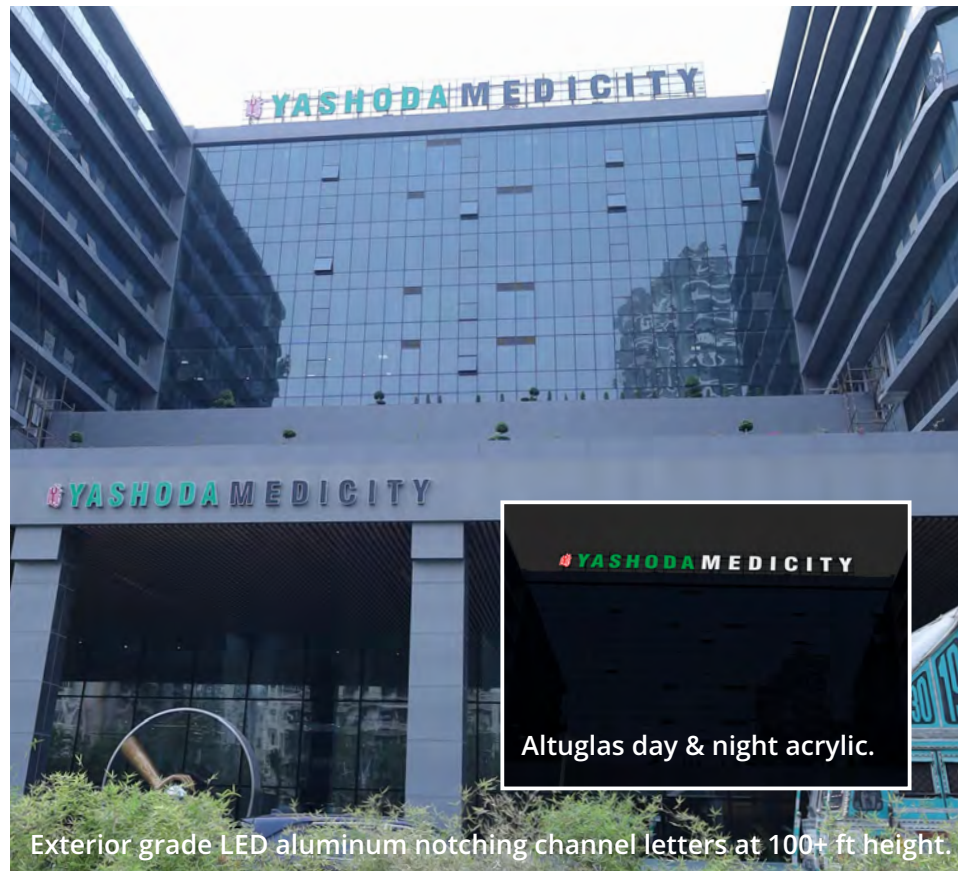


Modular Landscape totems having continuous three sided Lit Acrylic without any joinery.

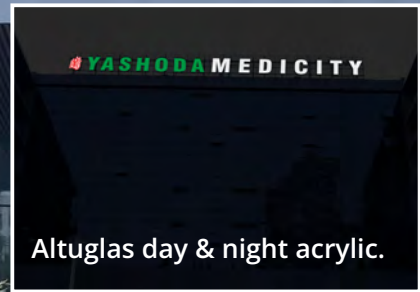




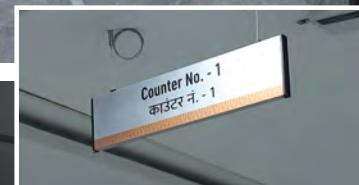
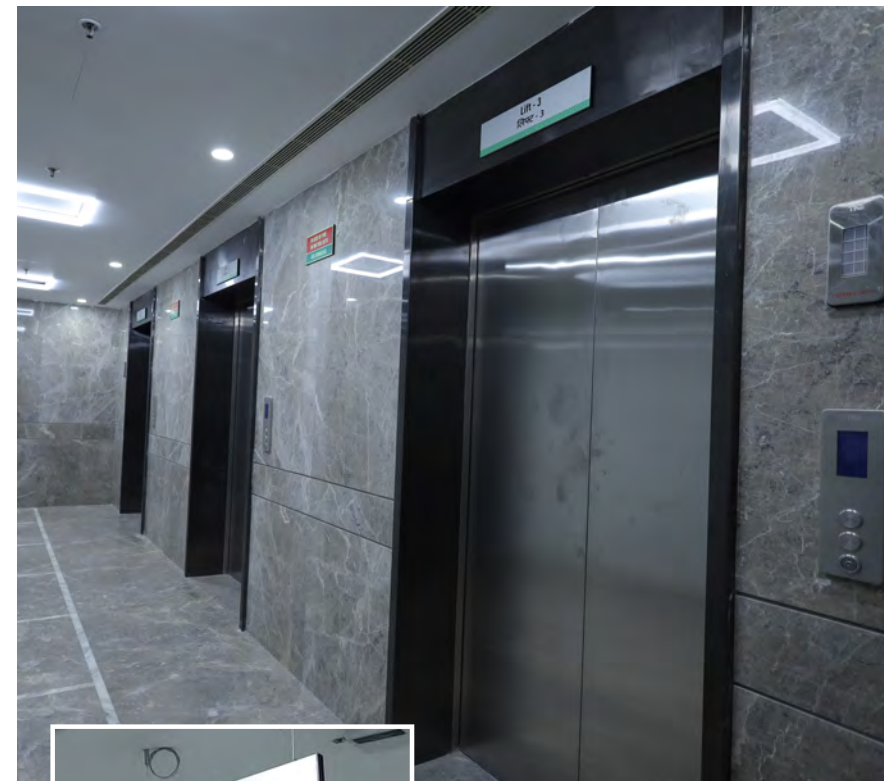
Complete MS structure with perforated sheet.



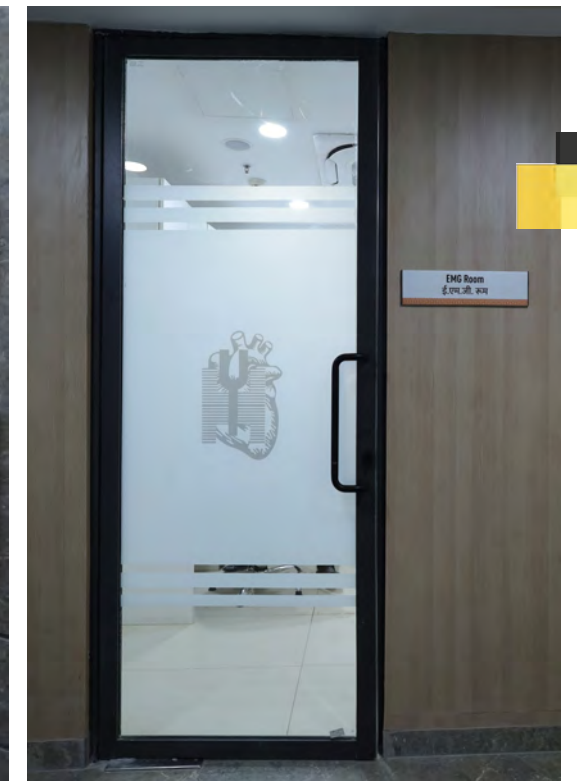
Exterior grade LED aluminum notching channel letters at 100+ ft height.



Altuglas day & night acrylic.



Counter No. - 1
काउंटर नं. - 1



EMG Room
इ.एम.जी. कक्षा



Disaster Management Store
डिजास्टर मैनेजमेंट स्टोर



Here are under
CCTV Surveillance



02



YASHODA MEDICITY

Gate 07



YASHODA CANCER CARE INSTITUTE (YCCI)



Durable and vibrant, our aluminium profile-based internal signages with UV flatbed printing deliver long-lasting visual impact and precise communication.

Transforming healthcare experience at Yashoda Hospital. Our modular wayfinding and totem signages blend the navigating functionality with aesthetics, creating a healing environment that's both informative and visually stunning.



FEW OTHER PROJECTS



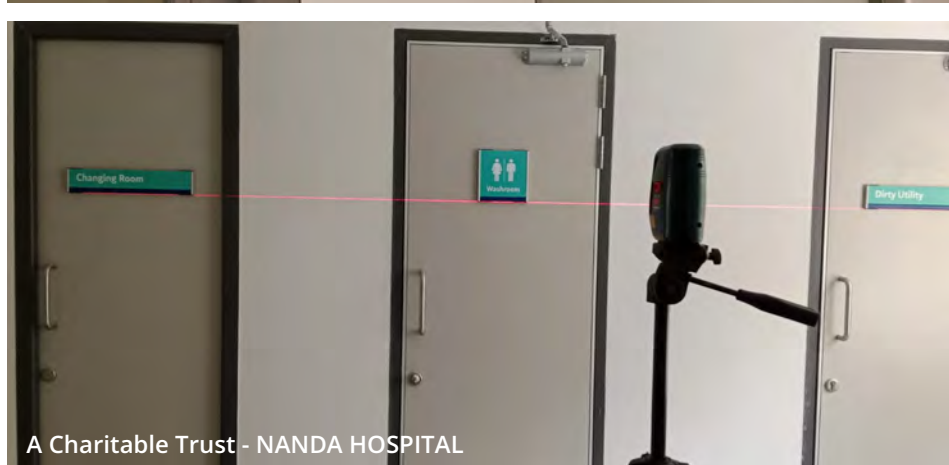
Brookfield Properties - CANDOR TECHSPACE



Brookfield Properties - WORLDMARK



OMAXE - International Trade Tower



A Charitable Trust - NANDA HOSPITAL



Eye Hospital - ACURAVISION



OUR HALL OF FAME



7. Global Award for Retail Excellence in Best Store Signage 2019 (24Seven)
8. VMRD Retail Design Award 2020 for Best Window Display (ICONIC)
9. VMRD Retail Design Award 2023 for Best Store front Signage & Architecture (Diesel)
10. VMRD Retail Design Award 2023 for Best Window Display (The Collective)
11. VMRD Retail Design Award 2023 for Best In-Store Visual Merchandising (Hamleys Play)
12. VMRD Retail Design Award 2023 for Best Stall Design.



1. VMRD Retail Design Award 2015 for Best Store Signage (Burger King)
2. Excellence Award for Best Retail Solution by Hon'ble Union Minister, Shri Kalraj Mishra ji, Govt. of India
3. VMRD Retail Design Award 2016 for Best VM Installation (Dior)
4. Image Partner of the Year for BURGER KING (2018)
5. VMRD Retail Design Award 2018 for Best Store Signage (24Seven, VIKASPURI)
6. Global Award for Retail Excellence in Best VM Installation in 2019 (ICONIC)

RETAIL EXPO PARTICIPATIONS



2023



2020



2019



2015



2016



FROM THE ARCHIVES



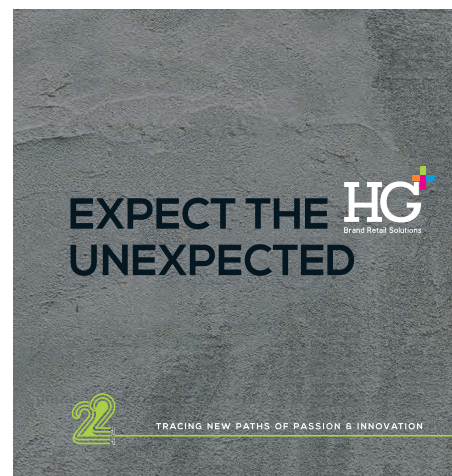
2015



2016



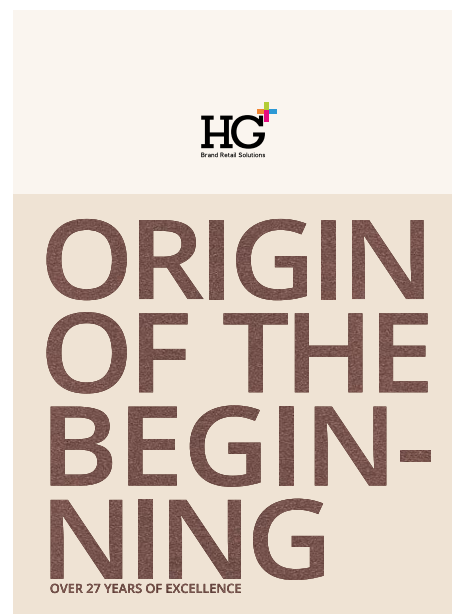
2018



2019



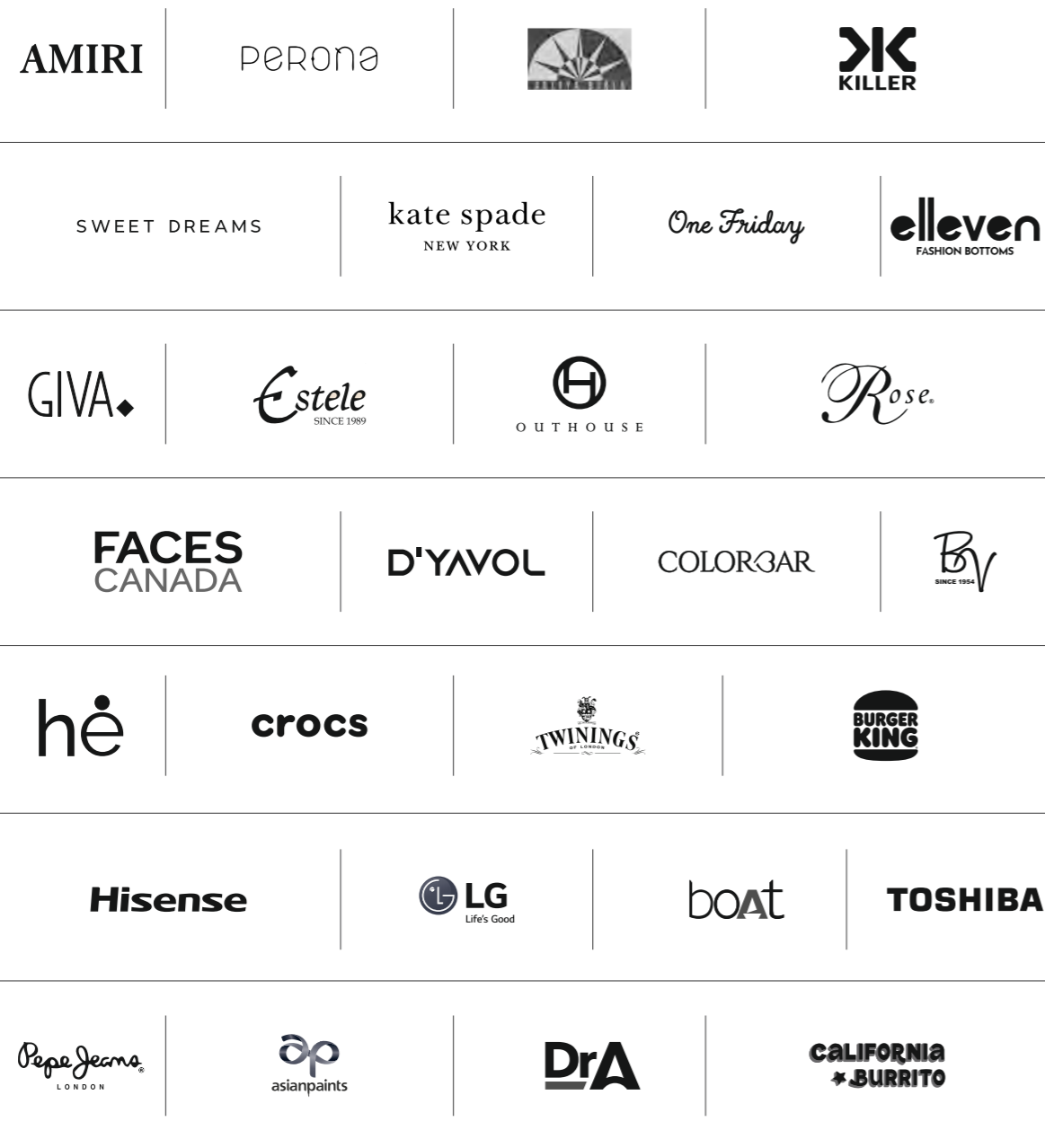
2023



2025



TRUSTED BY THE BEST



Published by:
HG Graphics Pvt Ltd

Contact:
info@hggpl.com
info@leobrs.com
01275 - 461000
+91-9810280168

www.hggpl.com
www.leobrs.com

Founder and Consultant:
Harjee Gandhi

Planning & Layouting
Mahesh Batra

3D Model & Rendering:
Gagandeep

Sourcing:
Ramakant Sharma

Photography:
Lucky Virodhiya

Printer:
Thomson Press India Ltd.



Sedex | SMETA
SMETA 4-PILLAR CERTIFIED FACTORY